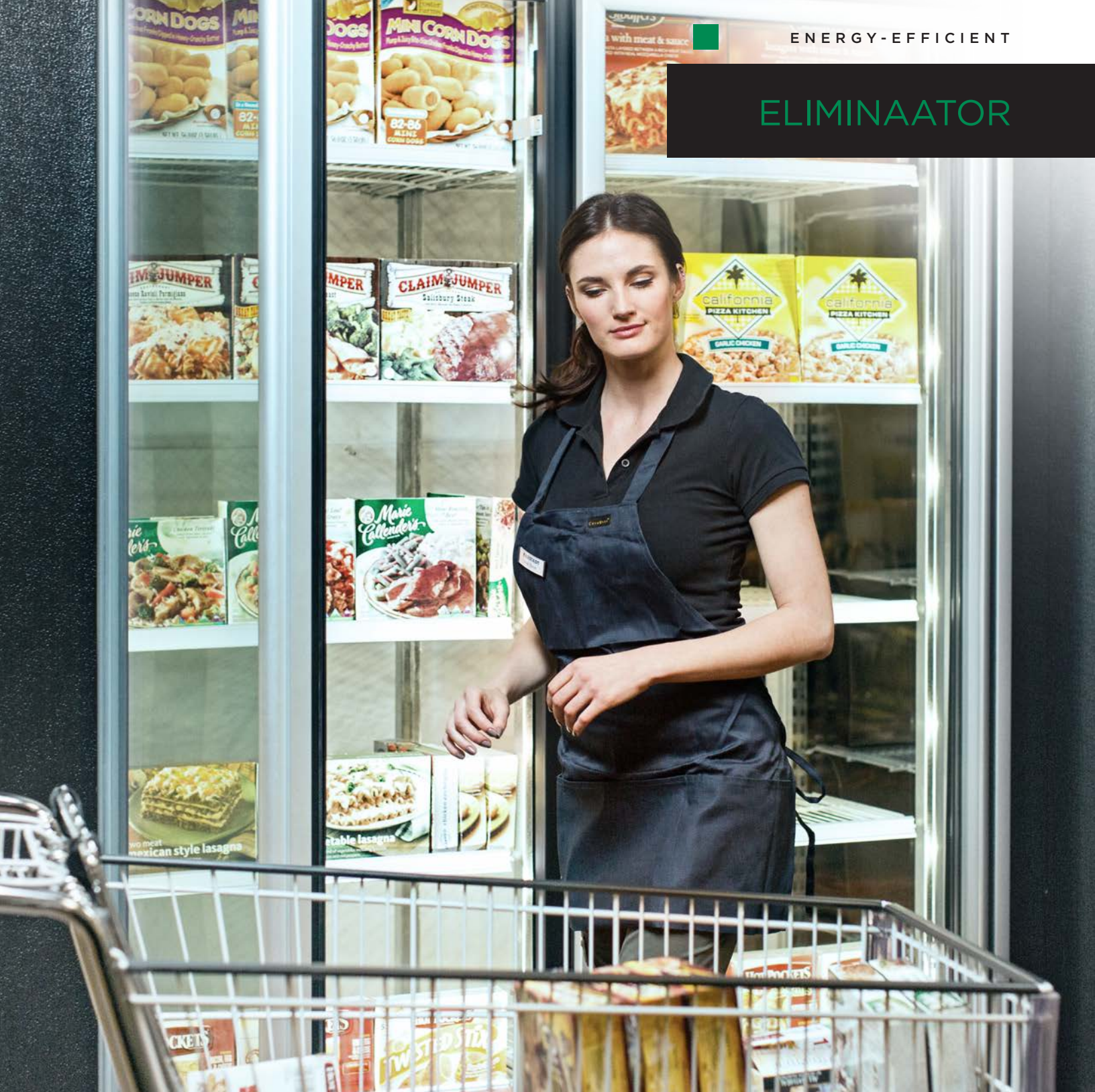


ENERGY-EFFICIENT

ELIMINAATOR



Advanced Door-Rail Design for Increased Energy Savings

Available with an advanced door-rail design and insulating materials to eliminate the need for door and glass heat, the Anthony Zero Energy Eliminaator Door is your solution for increased energy savings and return on investment.

Eliminaator

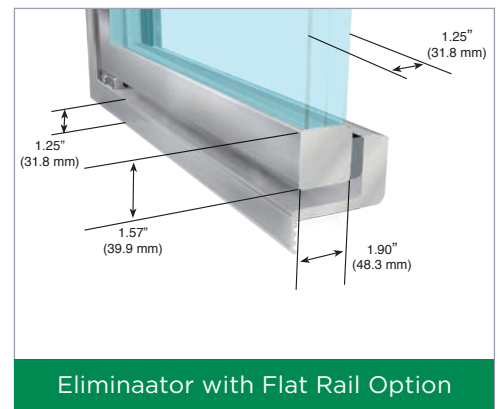
Advanced Zero Energy Design

The Eliminaator Door has been engineered with an advanced door-rail design to eliminate the need for anti-condensate heat for cooler applications and reduced heat for freezer applications, providing increased energy savings and return on investment.

COMPARISON CHART

	RUGGED & ROBUST		ENERGY-EFFICIENT	
	101 SERIES	ELIMINAATOR	ELIMINAATOR RENU	
FEATURES:				
Zero Energy Cooler Door	✓	✓	✓	
Zero Energy Freezer Door	X	X	✓	
Reversible	✓	✓	✓	
Low Energy Frame	Optional	Optional	Standard	
Annual Operating*	\$110	\$32	\$0	

* Freezer Application, \$12 kWh Utility Rate, one 30" x 67" Door Only



SHELVING	SHELF DEPTH OPTIONS		DOOR WIDTH OPTIONS	
	INCHES	MM	INCHES	MM
*Standard Shelving - (Five Shelves) Doors Less Than 79" (2 m)	24, 27, 36	610, 686, 914	24	610
*Standard Shelving - (Seven Shelves) Doors 79" (2 m) or Taller	24, 27, 36	610, 686, 914	26	660
Gravity Flow Shelving (GFS)	24, 27, 36, 42	610, 686, 914, 1067	28	711
Gravity Flow Merchandising (GFM)	42, 48, 60, 72	1067, 1219, 1524 1829	30	762
Double Wide Shelving	27, 36	686, 914		

Custom Shelving Available

*27" (686 mm) Shelf Depth Standard

LIGHTING	FIXTURE SIZE IN (MM)	CCT (K)	POWER (W)	ILLUMINANCE (LUX)*	UNIFORMITY**
Standard T-8 Fluorescent	24, 36, 48, 60, 72 (610, 914, 1219, 1524, 1829)	4100	17 - 70	653	11.3:1
Optimax Pro 24 Low Power LED	48, 54, 60, 72 (1219, 1372, 1524, 1829)	3500 4000	Left/Right: 7-9 Center: 14-18	1100	1:1:1
Optimax Pro 24 High Power LED	48, 54, 60, 72 (1219, 1372, 1524, 1829)	3500 4000	Left/Right: 9-12 Center: 18-24	1400	1:1:1

*60" (1524 mm) Lamp measured 4" (102 mm) from frame at door centerline

**60" (1524 mm) Fixture ratio at 4" (102 mm) from frame along vertical centerline



Applications:

- Cooler and Freezer
- Retrofit

Standard Features:

- Zero Energy Door for Cooler
- DOE Compliant
- Cooler Door - Triple Pane Nonheated Glass with Argon Gas
- Freezer Door - Triple Pane Nonheated Reflective Glass with Argon Gas
- Automatic Hold-Open
- Hinge Pin
- Torque and Sag Adjust
- Reversible Door Swing
- Magnetic Door Gaskets
- ELS (T8) Lighting
- White or Black Shelving with Galvanized Shelf Post

Options:

- Pass-Thru Door Version
- Low-Energy Frame
- Anti-Fog
- Cloze Control®
- LifePlus Gasket®
- Optimax Pro 24 LED
- Full Length Handle for Curved and Decorator Rail Only
- Electronic, Cylinder or POM Lock
- French Door Frame for Cooler Applications Only
- Extra Shelves
- Black/White Epoxy-Coated Shelf Posts