

# Vista Elite® Installation Instructions

99-16105-I004Rev E



Order replacement parts today, visit us at <https://www.anthonystore.com/>

©2017 Anthony, Inc. All rights reserved. Patent Pending. VISTA ELITE, ANTHONY and the ANTHONY Logo are trademarks of Anthony, Inc.

12391 Montero Avenue | Sylmar, CA 91342 | Phone: 800.772.0900

## Anthony Locations

Anthony is a manufacturer and solutions provider of glass doors, lighting systems and display equipment for use in commercial refrigeration systems. For more information on Anthony, please visit [www.anthonylntl.com](http://www.anthonylntl.com).

### North America Locations

#### Sylmar, CA

##### Corporate Offices

12391 Montero Avenue  
Sylmar, CA 91342  
Phone : 818.365.9451  
Toll Free US: 800.772.0900  
Canada : 800.336.8825  
Fax : 818.365.2441

#### Madison, GA

1101 Sovis Rd  
Madison, GA 30650  
Phone: 706.342.9300  
Fax: 706.342.9303

#### Conyers, GA

709 Sigman Road NE  
Conyers, GA 30013  
Phone: 678.607.3800  
Fax: 678.607.3700

### International Location

#### Shanghai, China

No.280, Lane  
928, Zhennan Road, Shanghai  
China 200331  
Phone: +86 216 284 8855  
Fax: +86 216 284 9513

For Replacement parts go to <https://www.anthonystore.com/>

For our latest instructional and informative videos visit our **YouTube** channel

For the latest news and upcoming product releases follow us on these social media platforms:



TWITTER



YOUTUBE



LINKEDIN



FACEBOOK

## Safety and Warnings

Your safety and the safety of others is very important. We have provided many important safety messages in this manual. Please read these messages carefully. These safety messages alert you to potential hazards that could hurt you or others or render damage to Anthony products.

Each safety message is associated with a safety alert symbol. These symbols are found in the throughout the manual. The definition of these symbols is described below:



**Protective Eyewear**– Potential risk of eye injuries, protective eyewear required when performing this and any other associated tasks.



**Protective Gloves**– Potential risk of injury to your hands, protective gloves required when performing this and any other associated tasks.



**Risk of Electrical Shock**– Potential risk of Electrical Shock; pay close attention to instructions when performing this and any other associated tasks.



**Commercial Refrigeration** – This symbol indicates for use inside a commercial refrigeration case with packaged foods only.



**Warning** – To reduce the risk of fire, electrical shock or injury observe the following:

1. Use this unit in the manner intended by the manufacturer.
2. Turn power off before removing existing lighting system and follow appropriate lock out/tag out safety procedures



**Stop** – Before you begin: Installation of this assembly requires a person familiar with the construction and operation of electrical systems and the Hazards involved. Read instructions completely and carefully.

### Qualified Personnel

The Anthony product/systems described in this installation manual should only be operated only by personnel qualified for the specific task in accordance with the relevant documentation, in particular its warning notices and safety instructions. Qualified personnel are those who, based on their training and experience, are capable of identifying risks and avoiding potential hazards when working with these Anthony products/systems.

## Table of Contents

<b>VISTA ELITE<sup>®</sup> DOOR UNPACKING INSTRUCTIONS.....</b>	<b>4</b>
OPENING SHIPPING CRATE.....	5
REMOVING DOORS FROM SHIPPING CRATE .....	7
<b>VISTA ELITE<sup>®</sup> FRAME AND DOOR INSTALLATION INSTRUCTIONS.....</b>	<b>8</b>
PRELIMINARY CONSIDERATIONS FOR FRAME & DOOR SERVICING .....	8
ORDERING REPLACEMENT PARTS.....	8
Tools Required .....	8
Recommendations and Suggestions.....	8
FRAME INSTALLATION.....	9
Frame Assembly and Parts .....	10
Instructions for Frame Installation .....	12
Shimming.....	12
Frame Electrical Wiring Connections.....	15
DOOR INSTALLATION.....	16
Vista Elite <sup>®</sup> Door Assembly and Parts.....	19
TORQUEMASTER AND SAG ADJUSTMENT.....	21
ANTI-FOG FEATURE .....	22
<b>PROPER DOOR MAINTENANCE FOR ANTI-FOG OPTION .....</b>	<b>23</b>
CARE AND CLEANING.....	23
Protective Film Removal from Door .....	24
<b>DOOR ASSEMBLY REMOVAL .....</b>	<b>26</b>
<b>OPTIONAL LOCK INSTALLATION .....</b>	<b>29</b>
<b>REVISION HISTORY .....</b>	<b>30</b>

## Vista Elite<sup>®</sup> Door Unpacking Instructions

Before installing the Vista Elite<sup>®</sup> there are several precautions that you must be aware of when staging and unpacking the doors from crate. The following section will address these precautions.

As always, please read this manual in its entirety. It should answer most of your installation questions. For personal and system safety, and for optimum product performance, make sure you thoroughly understand the contents before unpacking, installing, using, or maintaining this product.

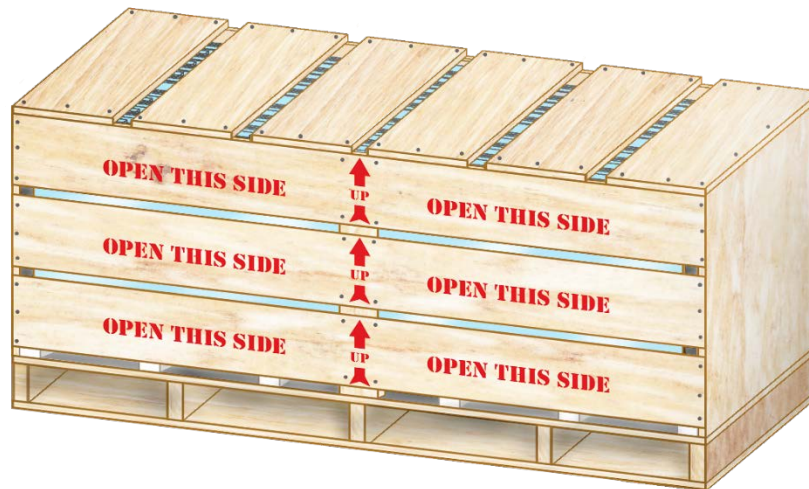


**Protective Gloves–** Potential risk of injury to your hands, protective gloves required when performing this and any other associated tasks.



**Warning:** Vista Elite<sup>®</sup> edge guards must NEVER be removed/ Removal will cause damage to the door.

Figure 1. Shipping Crate containing the Vista Elite<sup>®</sup> Doors



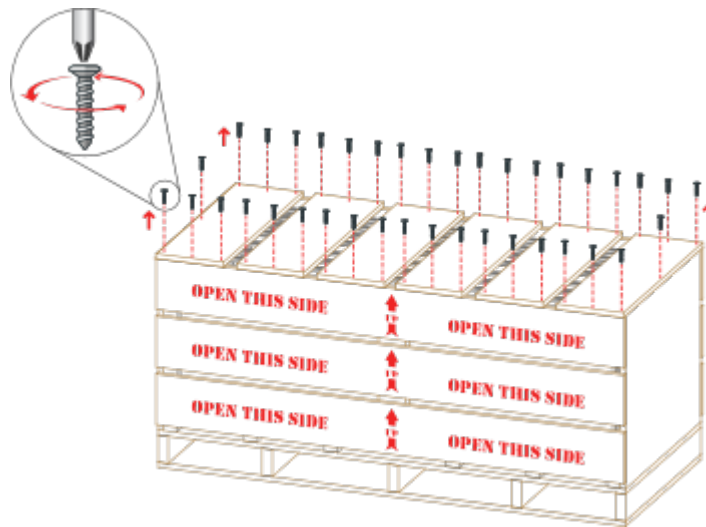
**Warning:** When removing Vista Elite<sup>®</sup> doors from crates DO NOT lift or remove the door from handles. Doing so will cause the handles to break off glass or possibly shatter the entire door! Please use extreme caution and have at minimal two people lift the door one person from each end to insure proper removal from crate. Also, the edge guards must NEVER be removed/ Removal will cause damage to the door.

## Opening Shipping Crate

Anthony takes great care to ensure that your doors arrive undamaged and in pristine shape. Please use and follow these steps to insure proper removal of your doors from shipping crate.

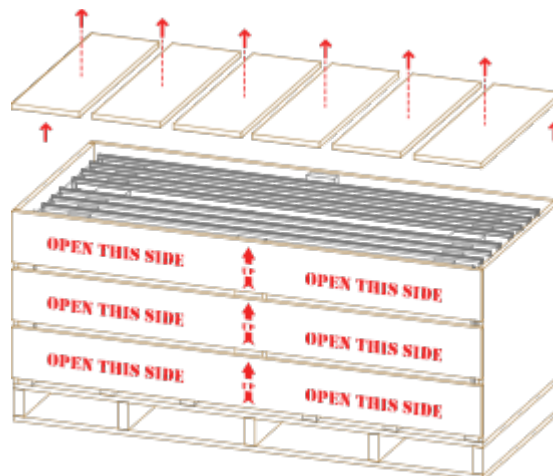
1. When staging the for installation, insure the crate(s) are in an area that is clear of obstructions and have enough clearance to be safely remove from crate such as furniture, fixtures, tool boxes, etc.
2. Start by using a screwdriver or drill with a Philips screw bit to remove the screws holding the top wooden slats onto the crate (see Figure 2. below).

*Figure 2. Unscrewing top portion of Shipping Crate*



3. After removing all screws securing top wooden slats to crate, remove the wooden slats (see Figure 3. below).

*Figure 3. Removing top portion of Shipping Crate*



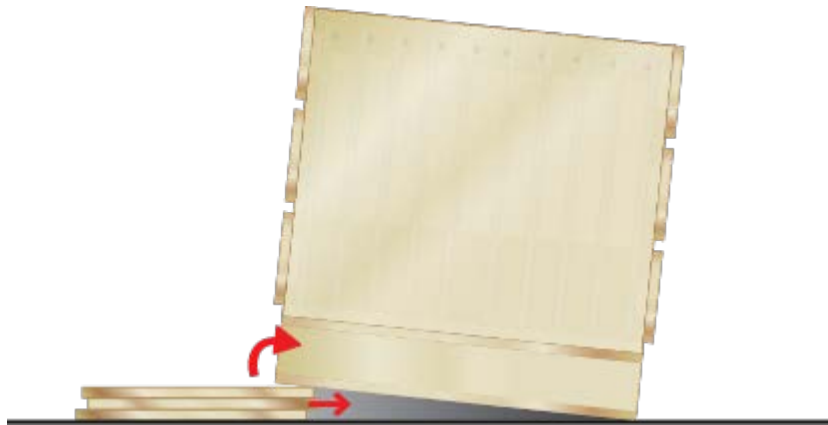




**Warning:** If you only have one or two people to remove doors from crate please see Step # 4; if 3 or more people are available proceed to Step # 5.

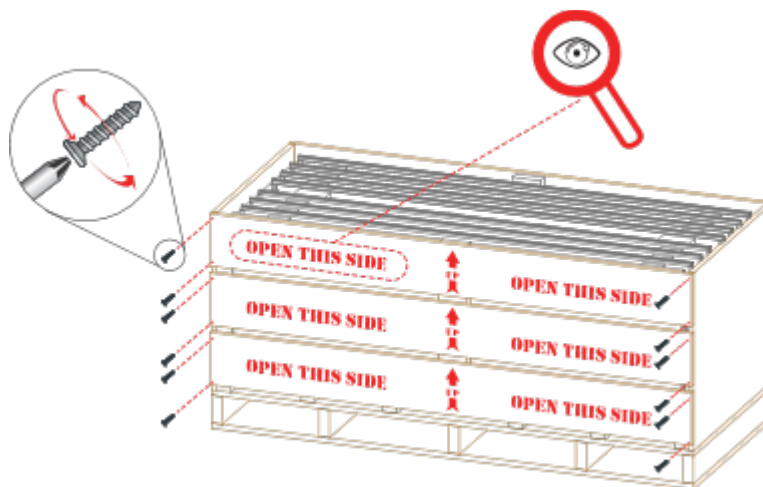
4. After removing the top wooden slats from crate, use the same wooden slats or another piece of wood to place under the crate to offset the weight as shown in Figure 4. below. Simply use a hand jack or forklift to lift front side with "Open This Side" marking enough to wedge in a few pieces of wood causing the weight of the crate to shift and insuring when doors are removed the rest will not fall over.

*Figure 4. Offsetting crate weight when only two (2) or less people are removing doors from crate*



5. The next step is to remove the front panel. To do this, unfasten the screws located along the front side panel (See Figure 5. below). The crate has been label with "Open this Side" to insure you do not open the incorrect side.

*Figure 5. Removing Front side of Shipping Crate*



**Warning:** When removing Front side of crate insure that you are opening side the is labeled "Open This Side". Do not unsecure or remove any additional crate panels, the doors have specifically been crated to be removed from the side indicated on crate.

## Removing Doors from Shipping Crate

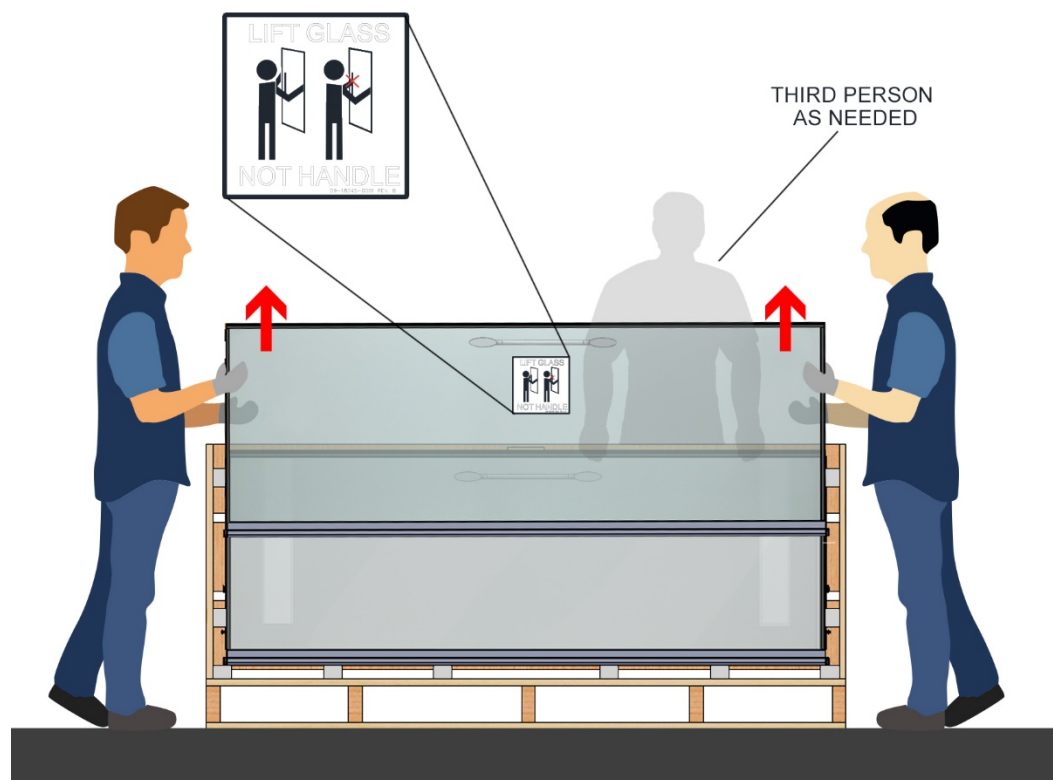
Please use and follow these instructions to insure proper removal of your doors from shipping crate.

1. When removing the doors from crate do not use door handles to lift or move the doors.
2. Have one person at each end firmly hold door and lift upwards to clear protective inserts at the bottom of the crate.
3. While Door is suspended in air and clear of any obstructions, carefully move away from the crate.
4. If possible have a third person holding doors in crate to insure the remaining doors do not fall over and possibly damage. If third person not available please see Step #4 in previous section "Opening Shipping Crate" to insure safely removing doors with less than 3 people.



**Warning:** When removing Vista Elite<sup>®</sup> doors from crates **DO NOT** lift or remove the door from handles. Doing so will cause the handles to break off glass or possibly shatter the entire door! If weight of crate is not offset as instructed in Step#4 make sure to have a third person holding the doors while they are being removed. The doors have a sticker indicating **NOT** to lift door from handle.

Figure 6. Removing Door from Shipping Crate Correctly



5. Continue to safely remove all doors from crate as needed. See section on page for instructions on how to installation door onto frame properly.



## Vista Elite<sup>®</sup> Frame and Door Installation Instructions

Please read this manual in its entirety. It should answer most of your installation questions. For personal and system safety, and for optimum product performance, make sure you thoroughly understand the contents before installing, using, or maintaining this product.



***Never lift or handle door by the handles, this will cause them to either break off glass or shatter the entire door! Please use extreme caution and have two people lift the door from each end to insure proper handling and moving of the door. Also, the edge guards must NEVER be removed/ Removal will cause damage to the door.***

### Preliminary Considerations for Frame & Door Servicing

#### Ordering Replacement Parts

Ordering replacement parts for your Vista Elite<sup>®</sup> is easy, visit us at [www.anthonystore.com](http://www.anthonystore.com) to place orders, lookup past work orders, and get quotes fast and easy.

#### Tools Required

#2 Phillips-head screwdriver  
Needle-nose pliers  
7/16" & 1/2" hand wrench  
Wire stripper and cutter  
Heat gun

Flat-head screwdriver  
Rubber or plastic mallet  
5/32" hex key  
Soldering iron  
Razor knife

#### Recommendations and Suggestions

- Ensure that the door edge guards are in place when the doors are uncrated prior to installation.
- Complete replacement of wire assemblies is recommended whenever required. Splice wires only if necessary, using proper materials such as electrical tape, wire nuts, flux core solder and heat shrink.
- Apply liquid soap to rail plastic covers and gaskets upon installation, to facilitate insertion into mounting grooves.
- Keep doors and frames clean for product efficiency. This can also help reduce energy consumption and potential health hazards.
- Whenever binding gasket or plastic parts, use food grade silicone.
- Whenever replacing fluorescent lamps, always replace lamp covers as well.
- Always use the correct tool for the job to be performed. This ensures proper installation and minimizes safety risks.
- If there is any doubt about the work to be performed, consult with a certified technician or Anthony representative.
- Preventative maintenance is recommended to ensure product longevity.



***Warning: Vista Elite<sup>®</sup> edge guards must NEVER be removed/ Removal will cause damage to the door.***

## Frame Installation

Read instructions completely before installing the frame.

- Clearance between the frame sill and the case bottom or floor is mandated by local building codes.
- Sill net opening height must be at a minimum of two inches.
- Sill must be completely level.



*Before installing the frame, confirm that the size of the net opening accommodates the finish frame. If the tolerances are too high, the net opening will have to be enlarged. When gap between the frame and net opening is greater than 1/8", shim the gap for a proper fit refer to Shimming Section for clarification. Check the size of the finished frame to the net opening.*



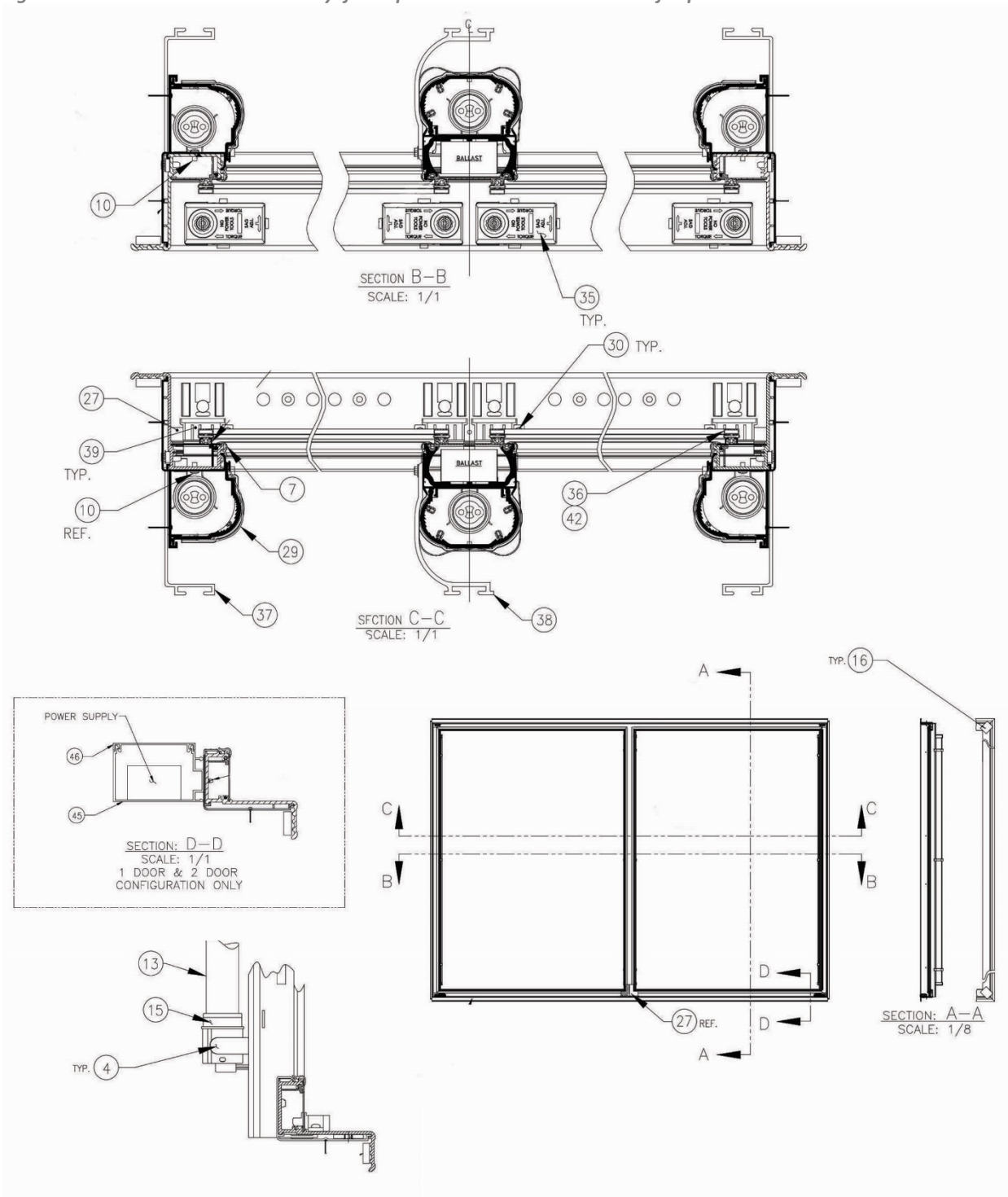
*Protective Eyewear– Potential risk of eye injuries, protective eyewear required when performing this and any other associated tasks.*



*Protective Gloves– Potential risk of injury to your hands, protective gloves required when performing this and any other associated tasks.*

## Frame Assembly and Parts

Figure 7. Vista Elite® Frame Assembly for Replacement Parts See Table 1 for part numbers



*Table 1. Vista Elite<sup>®</sup> Frame Replacement Parts*

ITEM	PART #	DESCRIPTION
4	15-12449-0001	CLIP, MNT, SCKT, T8
7	20-10619-1001	EXT, RET, FR & MUL
10	40-12665-3003	SCREW, 6-32 X 1/4, PPH, TP11, BLK ZC
13	60-11003-0014	LAMP, T8
15	60-14659-0001	ASSY, SCKT, LAMP, 101X
16	70-11965-0001	SEAL, GIB, SINGLE
27	70-10714-0001	SEAL, MUL, TOP & BTM
29	02-14787-000X	ASSY, LENS, END, MUL
30	40-12822-1003	SCREW, 8-32 X 1/4, PPH, TAPII, ZNC
35	02-10568-0001	ASSY, TORQ MSTR, #1 ,CLR
36	02-17218-0001	ASSY, GSKT, 2-DR, VISTA
37	11-12868-0001	BRKT, POST, MUL, END, MILL 1.25
38	11-10602-0001	BRKT ,POST, MUL, CTR, 1 1/4"
39	60-12376-000X	CONN, SGL STA SKT, 101
42	02-17278-0001	ASSY, GSKT, 1-DR, VISTA
45	11-10048-F010	FAB, RCWY, BAL
46	20-10049-F040	FAB, CVR, RCWY, BAL, CTR
<b>ITEMS NOT SHOWN IN FIGURE 7</b>		
	60-12486-0001	ASSY, SWITCH ,RKR, 101A/101X, 120V
	60-11203-0001	BUSHING ,RUBBER, SNAP-IN
	60-14693-0005	BAL, 120V, FUL, T8, F58/70, 1OR2 W/
	50-10632-0000	HEATER WIRE
	70-14962-0001	INSULATOR, RCWY CNR, FR, FLR



**Warning:** When removing Vista Elite<sup>®</sup> doors from crates **DO NOT** lift or remove the door from handles. Doing so will cause the handles to break off glass or possibly shatter the entire door! Please use extreme caution and have at minimal two people lift the door one person from each end to insure proper removal from crate. Also, the edge guards must **NEVER** be removed/ Removal will cause damage to the door.

## Instructions for Frame Installation

Verify openings conform to net openings listed in original order.

1. Insert the finished frame assembly into the net opening. DO NOT force the frame if the fit is too tight.
2. Insert a mounting screw into a mounting hole in each corner of the frame and tighten each screw until it is approximately a quarter inch from flush.
3. Check the frame is aligned properly or square. Refer to "Frame Installation Reference".
  - Use a measuring tape to measure diagonally one corner to the opposite and note the distance.
  - Measure the distance between the remaining corner.
  - Both measurements should be the same, within a 1/16" difference.
4. Confirm the frame and frame flanges are vertically aligned to the wall surface around the net opening. Refer to Frame Installation reference for further clarification.
5. Place a level on the top flange of the header frame to check if it is horizontally aligned.
6. If the top of the header frame sags or bows, correct as necessary.
7. When the frame is aligned, tighten all mounting screws securely until each is flush to the frame surface.



**Warning:** DO NOT over-tighten the screws, as this can cause the frame to become out of square.

8. Check entire frame to ensure installation is correct.

## Shimming

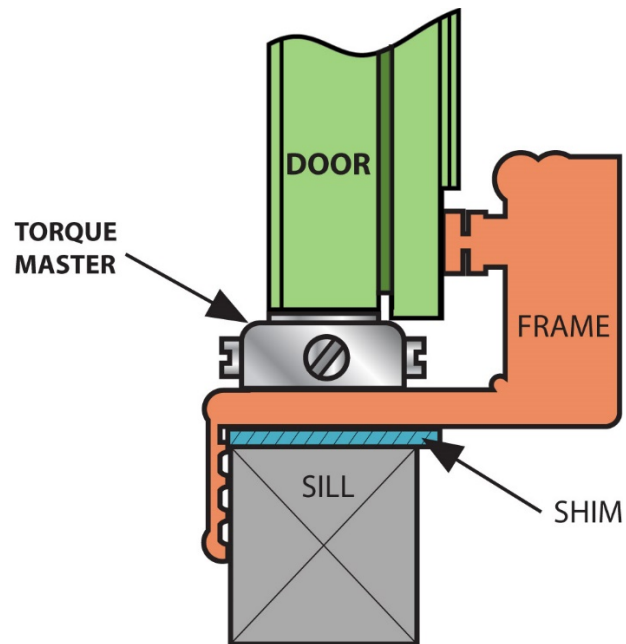
Check the size of the finished frame to the net opening.

- Subtract the frame height measurement, from the net opening's height measurement.
- Subtract the frame width measurement, from the net opening's width measurement.
- Divide each number in half. This is the amount of gap that will occur between the width of the frame and the net opening.

If the gap between the frame and net opening is greater than 1/8", shim the gap for a proper fit. Refer to Figure 8 for detailed view of Shim location.

1. Acquire sturdy, penetrable material, such as a piece wood. The thickness of the material should be wedge shaped or slightly less than the gap to be filled.
2. Measure the gap length (height or width of frame) and cut the shim material to 1/16" less than the measured length.
3. Install the shim using the same type of mounting hardware that will be used to install the frame. Be certain that the shim installation hardware will not interfere with the frame installation hardware.
4. If necessary, cut a second shim to the same length and install it in the opposite side of the net opening.
5. If the adjacent sides of the net opening need shimming, repeat the previous steps. Match the shim length to the frame sides of the net opening (less 1/16").

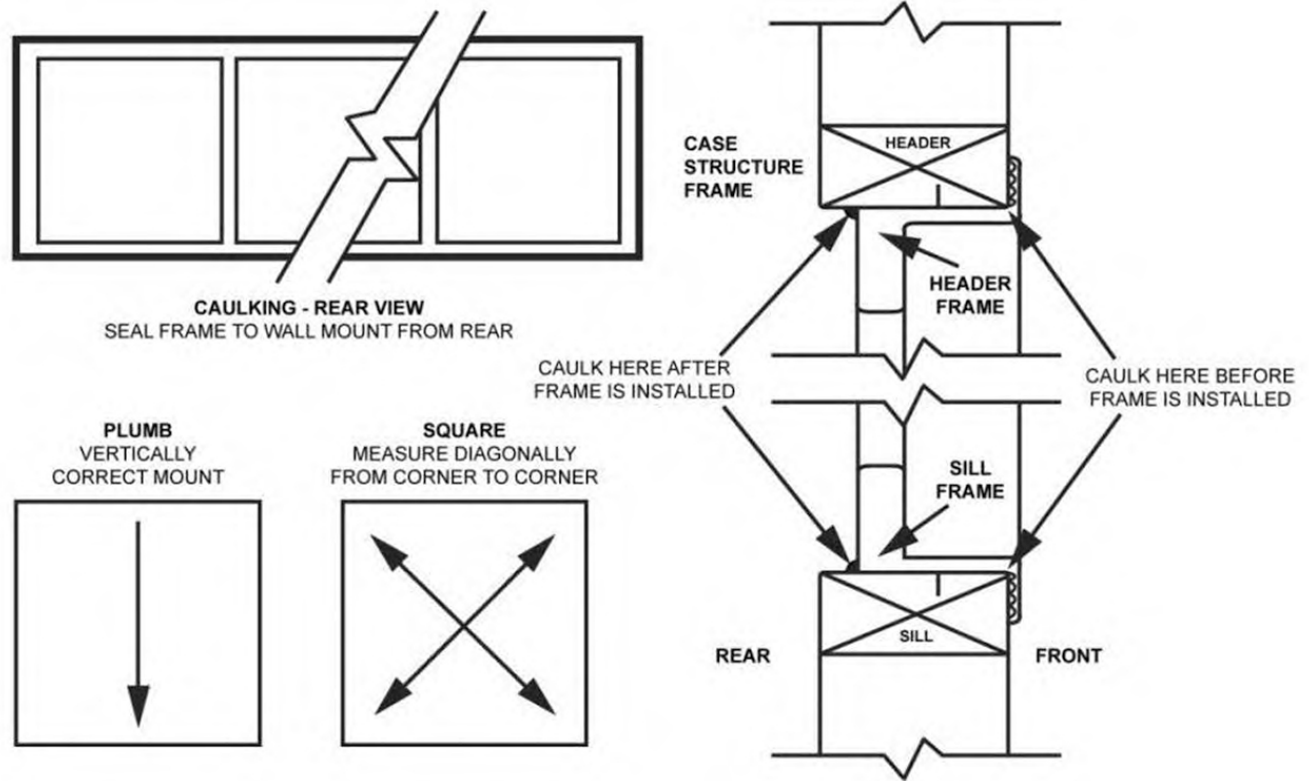
Figure 8. Vista Elite<sup>®</sup> and Frame Cross Section. (Shim Location)



**Warning:** Use only food grade silicone sealant (add caulking for larger gaps) to seal the gap between the frame and the surrounding wall, inside case, cooler or freezer. Not following these procedures can void Anthony's Service & Warranty on condensation and ice build-up issues.



Figure 9. Frame Installation Reference



## Frame Electrical Wiring Connections



**Warning** – To reduce the risk of fire, electrical shock or injury observe the following:

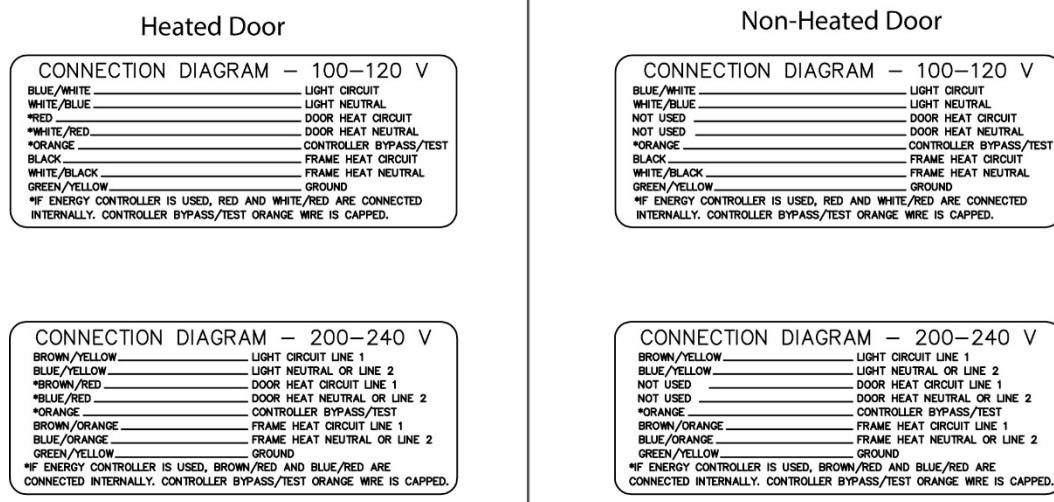
- Use this unit in the manner intended by the manufacturer.
- Turn power off before removing existing lighting system and follow appropriate lock out/tag out safety procedures



**Risk of Electrical Shock**– Potential risk of Electrical Shock; pay close attention to instructions when performing this and any other associated tasks.

The individual wires extending from the flexible conduit atop the frame provide electrical power to various frame and door functions. Refer to Wire Diagram Connection Labels shown in Figure 10 below, which are also affixed to the frame header, for the color-coded connections. Using wire connectors, these wires should be grouped by the HOT wires (Circuit wires), with the NEUTRAL wires and the GROUND wire connections going to their respective facility or case connections.

Figure 10. Wire Diagram Connection Labels for 100-120V and 200-240V



**Warning** – Wiring for lights should have separate circuit from the frame heater wiring circuit.

## Door Installation

The following instruction set will walk you through properly install the door onto the frame.



*When installing or handling doors never lift from door handle, this will cause them to either break off glass or shatter the entire door! Please use extreme caution and have two people lift the door from each end to insure proper handling and moving of the door. Smaller doors maybe weight less and only requires one person to lift or move. Also, the edge guards must NEVER be removed/ Removal will cause damage to the door.*



*Protective Gloves– Potential risk of injury to your hands, protective gloves required when performing this and any other associated tasks.*

1. Hold the door on each side, with the handle facing forward. Lift the door and align the torque rod to insert into the TorqueMaster™ socket at the base of the frame.

*Figure 11. Insert Torque Rod into Torquemaster*



2. Engage the door with the hinge pin inserted into the Gib (hinge pin plug) receptacle at the top of the frame. Push the door into the frame until the hinge pin snaps into place.

*Figure 12. Connect Hinge Pin*



3. Insert the hold-open screw through the hold-open standoff pivot hole.

*Figure 13. Installing door hold-open*



4. Insert the screw through the frame standoff and tighten with a Phillips screwdriver.

Figure 14. Installing door hold-open



5. Set the door tension swing and correct the door alignment by adjusting the TorqueMaster. (See "TorqueMaster and SAG Adjustment")



**Warning:** Exercise caution when handling the door.



**Warning:** DO NOT use power tools when adjusting the TorqueMaster.



**Warning:** DO NOT over tighten the hold-open bolt. Verify that the hold-open does not bind while sliding along the hold-open bolt. Adjust as necessary.



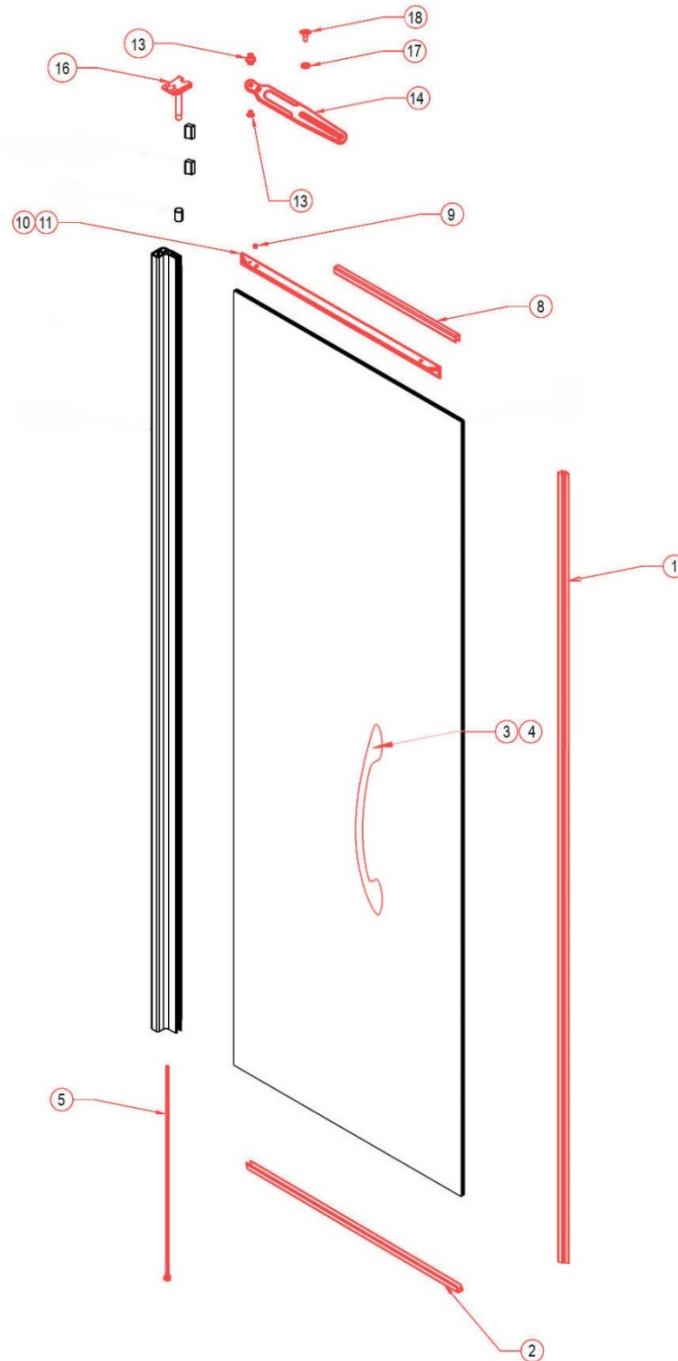
**Warning:** DO NOT use power tools when adjusting the TorqueMaster.



**Warning:** Vista Elite<sup>®</sup> edge guards must never be removed. Removal will cause damage to the door.

## Vista Elite<sup>®</sup> Door Assembly and Parts

Figure 15. Vista Elite<sup>®</sup> Door Assembly for Replacement Parts See Table 2 for Replacements Part Numbers



**Note: Parts depicted in Red can be replaced; Parts in Black are not replaceable**



*Table 2. Vista Elite<sup>®</sup> Door Replaceable Parts*

ITEM #	PART #	DESCRIPTION
1	20-21061-9042	EXT. GUARD, WIPER, VISTA, CLR, 108"
2	20-17117-9013	EXT. GUARD, EDGE, LONG, CLR,
3	45-17239-000X	HANDLE, ARC, DR, VISTA
4	70-17278-0001	TAPE, FOAM, CUT, HANDLE, VSTA
5	02-10308-0007	ASSY, TORQUE ROD
8	20-17117-9013	EXT. GUARD, WIPER, LONG, CLR (CUT TO LENGTH)
9	20-15819-0001	PLUG, TRUSS, 211 DIA, NATURAL
10	70-16653-0003	TAPE, VHB, DOUBLE-SIDED, 1" X 8.3", BLK
11	11-22408-000X	BRACKET, HOLD OPEN, VSTV
13	40-14616-0001	STANDOFF, PIVOT, HOLD OPEN
14	15-14707-0001	HOLD OPEN, FORK, CLSD END
16	60-12723-0003	ASSY, PLUG, HINGE PIN, 40", CLR
17	10-15097-0001	SPACER, DETENT, HOLD OPEN
18	40-15096-001	BOLT, DETENT, HOLD OPEN , VISTA



**Warning:** When removing Vista Elite<sup>®</sup> doors from crates **DO NOT** lift or remove the door from handles. Doing so will cause the handles to break off glass or possibly shatter the entire door! Please use extreme caution and have at minimal two people lift the door one person from each end to insure proper removal from crate. Also, the edge guards must **NEVER** be removed/ Removal will cause damage to the door.

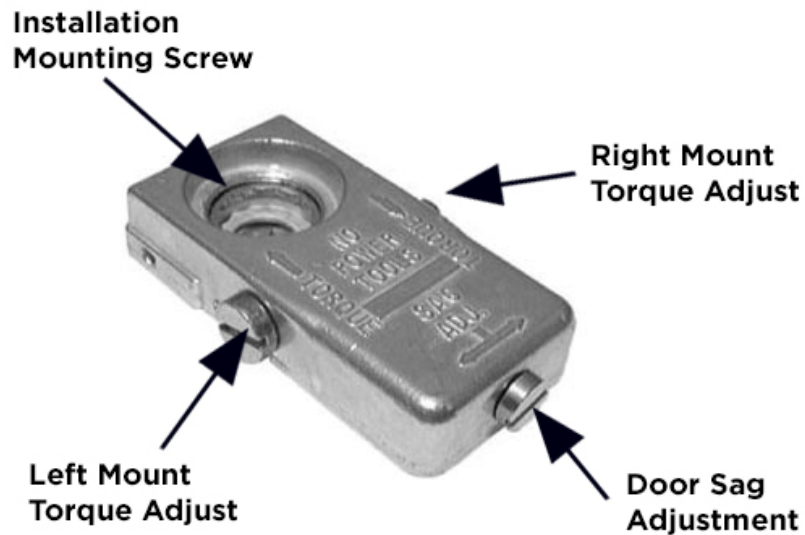
## TorqueMaster and Sag Adjustment

The following instruction set will walk you through properly adjusting door location and door sag. In-depth video instructions available on [anthonyintl.com](http://anthonyintl.com) and our [YouTube Channel](#).



**Warning:** Exercise caution when handling the door and **DO NOT** use power tools when adjusting the TorqueMaster™.

Figure 16. TorqueMaster



1. Use a flathead screwdriver to adjust the torque rod tension, by turning the outside screw on the TorqueMaster.
  - Turn counter-clockwise to increase tension.
  - Turn clockwise to decrease the tension.
2. Adjust the door sag to square the door in the frame by turning the screw that is marked SAG ADJ. (sag adjustment), on the end of the TorqueMaster, until the door is aligned square in opening.
  - Turn counter-clockwise to raise handle side of door.
  - Turn clockwise to lower the handle side of door.

**Anti-Fog Feature ( OPTIONAL before 3/1/2018 )**  
**Orders sold before 3/1/2018 with glass code 2PNLV only !**

For doors with Anthony's Anti-Fog Film Feature please find the "Anti-Fog Film Instructions" attached to your Vista Elite® door. Insure that you take the time to read these instructions carefully and thoroughly.

1. Find the “Anti-Fog Film Cleaning Instructions” document attached to your door.

**Figure 17. Anti-Fog Film Cleaning Instructions**



2. Make sure to review and read all warnings and care instructions on this document.
3. Store the “Anti-Fog Film Cleaning Instructions” document in a safe place where you can access easily in future when needed.

## Proper Door Maintenance for Anti-Fog Option

The following instruction set will walk you through properly removing door from frame.

The Anti-Fog Film on your Anthony product is a scratch resistant, permanent coating that prevents fogging and icing of cold surfaces. On transparent substrates, it provides a clear view (e.g. through a refrigerator door when opened). Described herein are the cleaning instructions should only be performed only by personnel that are qualified and/or fully understand the specific tasks in accordance with this documentation, in particular its warning notices, safety instructions, and the non-use for harmful chemicals which will hinder effectiveness or damage the PET Film.



***Failing to abide by the following cleaning instructions will result in a loss of Anthony Factory Warranty Function***

The PET Film coating absorbs moisture on its surface as well as absorbs water vapor within its volume. Therefore, it does not only spread water drops to improve visibility at temperatures above 0°C but also inhibits formation of ice crystals on the surface. In a refrigerator, after closing the door, this function is regenerated by absorption of water to the dry inner atmosphere. Although it absorbs moisture, the coating does not dissolve in water, so it will not smudge when wet.

### Care and Cleaning

Initial wetting/washing with water is recommended to reach full function.

Cleaning can be performed using common household glass cleaners (Sidolin<sup>®</sup>, Windex<sup>®</sup>, Mr. Muscle<sup>®</sup>) and a tissue or paper towel. However, on very cold surfaces these cleaners may freeze. In these cases, a mixture with 30% pure alcohol and water may be used. At temperatures above 0°C, warm hand temperature water with a mild detergent can be applied.

Other recommended cleaners include: Greased Lightning<sup>®</sup>, Formula 409<sup>®</sup> Grease & Grime, Fantastik<sup>®</sup>, Windex<sup>®</sup> Vinegar, Windex<sup>®</sup> original, MicroClean Professional APC<sup>®</sup> (formerly Now<sup>®</sup> all-purpose cleaner), Mean Green<sup>®</sup>, or Mr. Clean (degreasing cleaners). If you have any questions about the use of a particular cleaner, please contact Anthony (800) 772-0900.

Recommended cleaning is with a soft dry or slightly damp towel, or with one of the degreasing cleaners listed above.



***Any cleaners which contain abrasives may not be used. Do not contaminate the door with silicone. Do not use tape, glue, stickers, attachments, magic markers or similar products on the film coating. Do not use razor blades or other mechanical device to remove foreign residue or objects directly on film coating. Do not use abrasive cleaners or materials on the film coating like Ajax<sup>®</sup>, Scotch Brite<sup>®</sup> or Steel Wool. Do not use cleaners or materials that contain silicone oils or waxes, these hinder the anti-fog performance by leaving residue and/or damage the film coating surface. Examples of these type of cleaners include and not limited to: ArmorAll<sup>®</sup>, Tilex<sup>®</sup>, Bleach, Windex<sup>®</sup> No-Drip, Windex<sup>®</sup> Wipes, Pledge<sup>®</sup>, or any product containing silicone oils or waxes.***

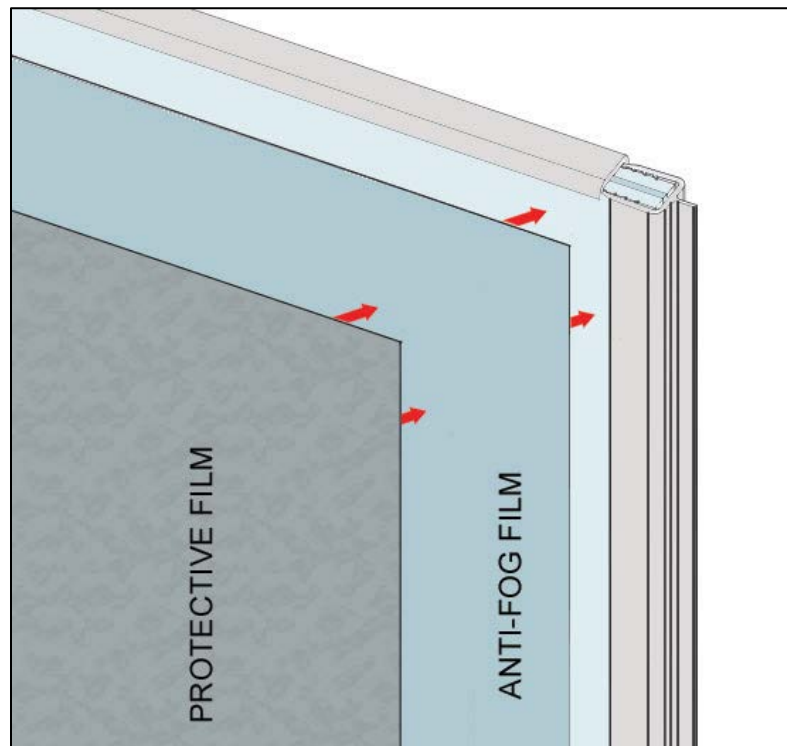


***Failing to abide by the following cleaning instructions will result in a loss of Anthony Factory Warranty***

## Protective Film Removal from Door

Doors with Anti-Fog include a secondary protective film which sole purpose is to protect the doors and Anti-Fog feature while in transport, handling and installing. This secondary Protective film is to be removed carefully without removing the Anti-Fog film. The secondary protective film is visible to the naked eye, when doors are prepared for shipping the protective film is pulled back then re-attached creating air bubbles, which is to cause an obstructive foggy view and help installers identify the secondary protective film. This protective film is to be removed carefully without removing or damaging the Anti-Fog film.

*Figure 18. Anti-Fog Film and protective film*

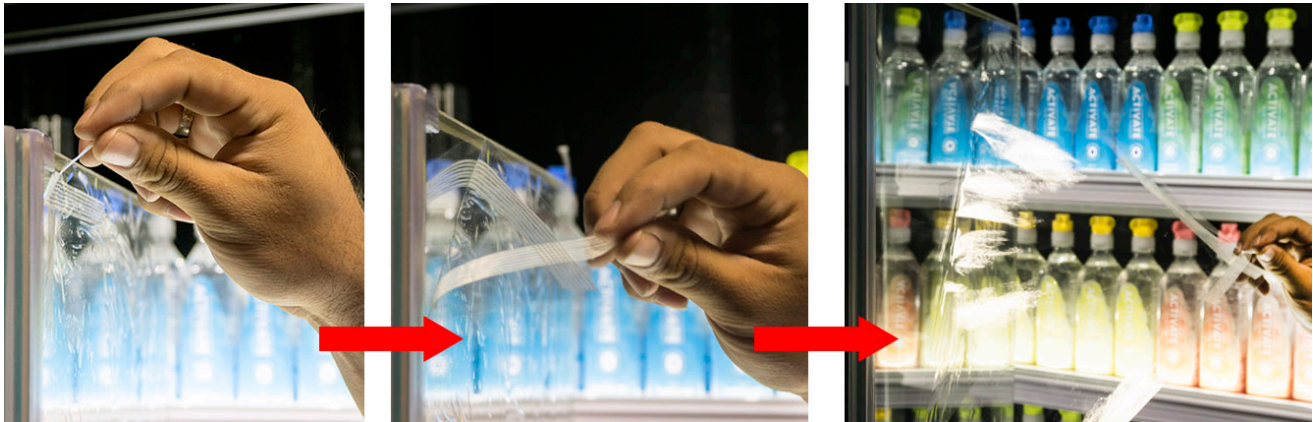




**Warning:** Exercise caution when removing film from door; your door includes a permanent Anti-Fog coating which is not to be removed for safety and optimal performance. Removing the Anti-Fog Film will void your warranty. The door includes a second temporary protective film that protects glass when shipping and installation; Note remove this only after the door has been properly installed.

1. The protective film will have a few pieces of tape attached to the top corner of door.
2. Carefully grasp this tape with your index finger and thumb and proceed to slowly remove the protective film from door. See Figure 19.

*Figure 19. Protective film removal Instructions*



**Warning:** Do NOT use razor, fingernails or any other sharp objects to remove the protective.

3. If you can clearly see that there is a protective film and no tape at ends carefully use a piece of tape to stick onto film then pull away allowing the protective film to come free from glass.
4. Proceed to gently remove protective film as shown in Figure 19.
5. Refer to the "Anti-Fog Film Cleaning Instructions" document attached to your door for maintenance and proper cleaning.



## Door Assembly Removal

The following instruction set will walk you through properly removing door from frame.



**Warning:** *Exercise caution when handling the door.*

1. Release tension on the TorqueMaster with a flat-head screwdriver. Turn the TorqueMaster front facing screw clockwise, until the door does not automatically close from an open position.

*Figure 20. Release TorqueMaster Tension*



2. Open the door to access the hold open device and remove the screw from the hold open with a Phillips screwdriver.

*Figure 21. Remove Hold Open Screw*



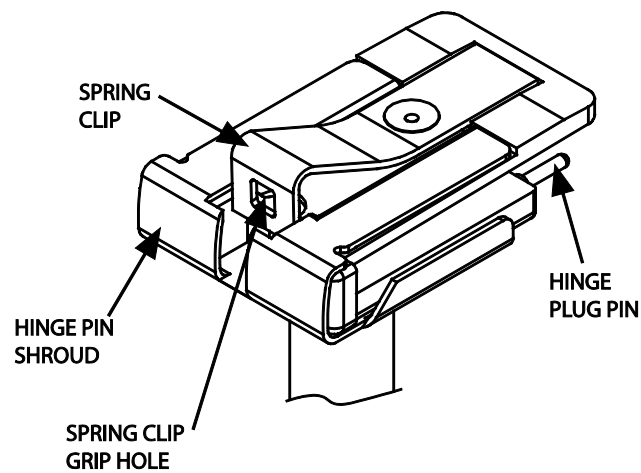
3. Retract the door to a near-closed position.

*Figure 22. Door in near-closed position*



4. Remove the hinge pin plug from the frame by inserting the top-half of needle-nose pliers into the spring clip grip hole and the bottom half beneath the hinge pin shroud.

*Figure 23. Disengaged Hinge Pin*



5. Compress the pliers to clamp down on the hinge pin spring clip, then simultaneously pull the hinge pin away from the frame and pull the door top out.

*Figure 24. Disengaged Door*



6. Lift the door out of the TorqueMaster and secure or lean the door on its side against a stable surface.

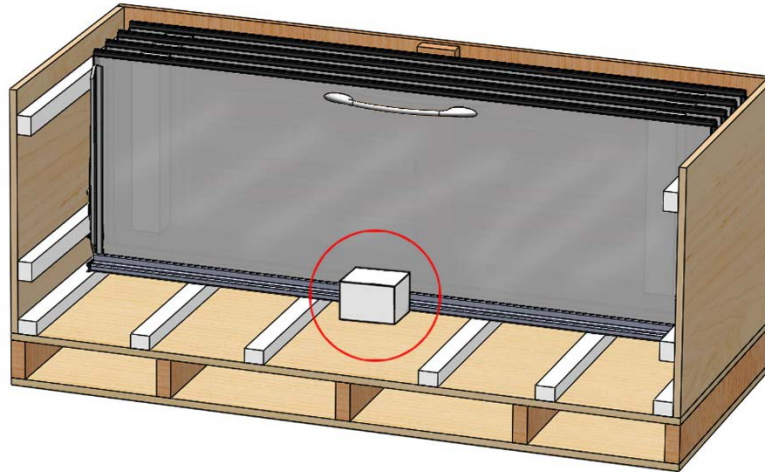
*Figure 25. Withdraw from Frame*



## Optional Lock installation

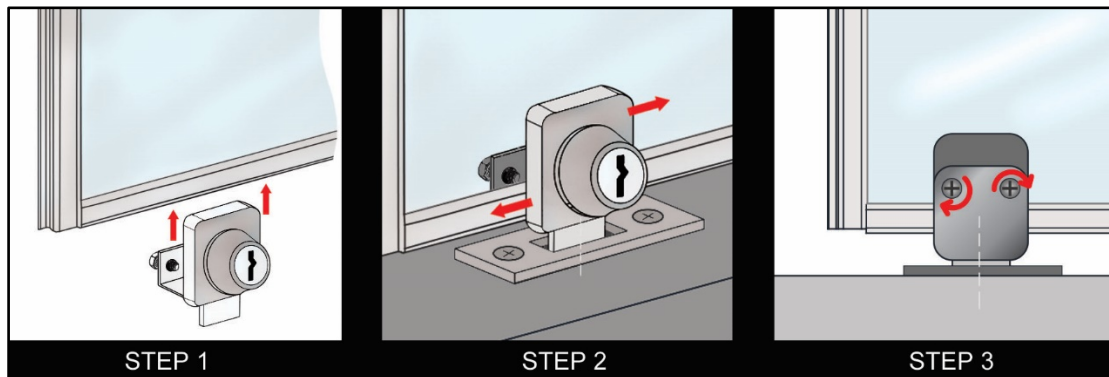
If you have ordered the Optional Glass Clamp Locks for your Vista Elite Door the following instruction set will walk you through proper installation.

*Figure 26. Lock location*



1. The locks are in a small box inside crate in between doors see Figure 26 above.
2. To install the locks, insure that the retaining screws are loosened to allow enough clearance to be placed over the door edge guard and glass as shown in Step 1 in Figure 27 below.

*Figure 27. Installing the Lock*



3. Once cylinder lock is placed over edge guard and glass slide lock to the left or right to align the lock with the Strike plate on the Frame as shown in Figure 27 Step 2.
4. Finally, once you have aligned and tested that lock is engaging properly tighten the screws located on backside of lock to secure in place as shown in Figure 27 Step 3.

## Revision History

REV	ORIGINATOR	DESCRIPTION OF CHANGE	REVIEWED BY	APPROVED BY	DATE
A	SAM FISHER	INITIAL RELEASE			11/09/2015
B	ALFREDO MARTINEZ	REVISED TO NEW FORMATTING			02/14/2017
C	ALFREDO MARTINEZ	WIRING DIAGRAM INSTRUCTIONS REVISED			03/01/2017
D	ALFREDO MARTINEZ	UPDATED MANUAL TO INCLUDE CRATE REMOVAL; CLEANING INSTR			10/06/17
E	KATHLEEN HOLST	UPDATE MANUAL TO CURRENT PRODUCTION AntiFog Prior 3/1/2018		APPROVED BY CCB	3/22/2018

© 2017 Anthony, Inc. All rights reserved. Patent Pending. VISTA ELITE, ANTHONY and the ANTHONY Logo are trademarks of Anthony, Inc.

Ajax<sup>®</sup> is a registered trademark of Colgate-Palmolive Company. | ArmorAll<sup>®</sup> is a registered trademark of Armored Auto Group. | Fantastik<sup>®</sup>, Pledge<sup>®</sup>, Mr. Muscle<sup>®</sup>, and Windex<sup>®</sup> are registered trademarks of S.C. Johnson & Son, Inc. | Formula 409<sup>®</sup> and Tilex<sup>®</sup> are registered trademarks of The Clorox Company. | Greased Lightning<sup>®</sup> is a registered trademark of HomeCare Labs. | Mean Green<sup>®</sup> is a registered trademark of CR Brands, Inc. | MicroClean Professional APC<sup>®</sup> (formerly Now<sup>®</sup> all purpose cleaner) is a registered trademark of The Mirachem Corporation. Mr. Clean Top Job<sup>®</sup> is a registered trademark of Procter & Gamble. | Scotch Brite<sup>®</sup> is a registered trademark of 3M. | Sidolin<sup>®</sup> is a registered trademark of Thompson-Siegel Gesellschaft Mit Beschraenkter Haftung GmbH.