



2024

Anthony — the Industry Leader in Glass Refrigeration Cooler & Freezer Doors and Merchandising Systems.

DOORS

NORMAL TEMP | LOW TEMP

Fundamentally redesigned and re-engineered. Anthony® Doors are now standard with advanced anti-condensate sweat protection to keep your cold vault cold, save money and sell more merchandise. The next step in enhancing the shopper experience is selecting the right door.

In need of a rugged and robust solution, both our 401 and 101 series are proven the most durable, reliable, and versatile doors in the industry. Looking to optimize merchandising, our Vista® C Series and Infinity® 60 Series will captivate your shoppers! Our true gem is our Infinity® 90 Series which delivers the best of both worlds— a rugged and robust design with our Infinity Edge design for optimized merchandising. Our innovative New Air Shield Technology is now standard on our 401, 101, and Infinity 90 series, this new feature adds a secondary seal for enhanced thermal protection.

Choose from various colors, finishes and swings to match your store aesthetics, pack-out and shopping engagement objectives.





GENUINE PROTECTION | GENUINE QUALITY | GENUINE RELIABILITY



1

2

3

4

Next Generation Protection

Retailers know the most effective ways to merchandise products contained in their coolers and freezers, they know that sales of these important and high-margin products have to be maximized. Anthony is continuously improving our products and portfolio to help retailers achieve these goals. Our next generation walk-in door and frame platform comes with a number key features that improve its thermal efficiency and raise its Anti-Condensate Sweat Protection ~ helping our customers save more money and sell more product.

Feature #1:

Next Generation Frame

Our re-engineered and re-designed frame includes new improvements such as vacuum insulated paneling, fully sealed enhanced mullion design, and the overall reduction in the number replacement parts. This new frame improves thermal efficiency, and adds additional Anti-condensation sweat protection.

Feature #2:

Air Shield Technology

Our new Air Shield Technology provides our 401, 101, and Infinity 90 Series an added layer of thermal protection and improved sealing for overall Anti-condensate sweat protection, by blocking air and heat transfer at the door rail. Air Shield Technology along with our new next generation frame, and LifePlus Gasket® sets a new standard of performance.



Feature #3:

Optimax 7 Series LED

The new Optimax 7 LED Series Lighting optimizes cold-vault merchandising through achieving best-in-class uniformity, high color rendering, and improved efficacy that creates improved product visibility for merchandise in convenience-store and grocery-store retailers. The Optimax 7 Series LED provides superior lighting, with remarkable aspects and values, such as Lumen output, CRI, and LUX incident on target area are key to achieving the best light to optimize your merchandise.

Feature #4:

LifePlus Gasket®

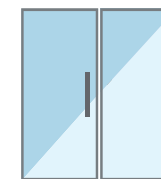
Our LifePlus Gasket® provides superior sealing performance and longer life compared to standard PVC gaskets to better lock in refrigerated air and save energy costs. Made from long-lasting polymers, the LifePlus Gasket® retains tight sealing performance throughout repeated thermal changes including anti-condensate heat cycles, and repeated door openings and closings. Our LifePlus Gasket® comes standard with a three year parts and one year labor warranty thereby lowering operating costs and decreasing the need for maintenance. LifePlus Gasket® is the New Standard in commercial refrigeration gaskets.

401 Series

2017
DOE
COMPLIANT

Key Features

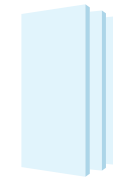
- 75°F, **55%RH** ambient/35°F Cooler
- 75°F, **55%RH** ambient/-10°F Freezer
- Trimline Handle
- Optimax 7 Low Power LED
- 24" Deep Shelving



Metal Edge
Standard Swing



NT 2-Pane
Glass Pack



LT 3-Pane
Glass Pack

FEATURES / BENEFITS

- Our entry level door is economical and designed for applications requiring strong and robust doors.
- Door Air Shield Technology for advanced Anti-condensate Sweat Protection.
- 2-PANE, for Normal Temp; 3-PANE for Low Temp, non-heated, Low E glass with argon gas.
- Heated Frame Rail
- Hold-open feature allows easy stocking and shoppers easy access to merchandise.
- 87° Door stop feature limits how far the door opens to minimize impact with adjacent doors and shoppers.
- Energy-saving Optimax **7** Series Low Power LED lights for enhanced illumination.

SHOWN ABOVE

Black 401 Series with Trimline Handle with optional cylinder door locks

OPTIONS / UPGRADES

- Matching Pass-Thru Door Available
- Anti-Fog
- Various Lock Options
- Gravity Flow Shelving
- Gravity Flow Merchandising
- Roll-A-Way Cart Options

RUGGED & ROBUST



Normal & Low
Temp



SIZES AVAILABLE

NORMAL TEMP

2-PANE GLASS PACK W/ ARGON GAS
75°F, 55% RH AMBIENT / 35°F WALK-IN

24" W x 67" T	28" W x 75" T
26" W x 67" T	30" W x 75" T
28" W x 67" T	24" W x 79" T
30" W x 67" T	26" W x 79" T
24" W x 75" T	28" W x 79" T
26" W x 75" T	30" W x 79" T

LOW TEMP

3-PANE GLASS PACK W/ ARGON GAS
75°F, 55% RH AMBIENT / -10°F WALK-IN

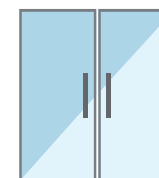
24" W x 67" T	28" W x 75" T
26" W x 67" T	30" W x 75" T
28" W x 67" T	24" W x 79" T
30" W x 67" T	26" W x 79" T
24" W x 75" T	28" W x 79" T
26" W x 75" T	30" W x 79" T

101 Series

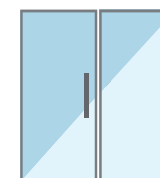
2017
DOE
COMPLIANT

Key Features

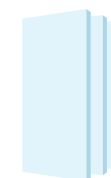
- + 75°F, **65%RH** ambient/35°F Cooler
- + 75°F, **65%RH** ambient/-10°F Freezer
- + Slimline Handle
- + Optimax 7 Standard Power LED
- + 27" Deep Flat Shelving
- + LifePlus Gasket® 3-year Warranty
- + French Swing Option



Metal Edge
French Door



Metal Edge
Standard Swing



3-Pane
Glass Pack

FEATURES / BENEFITS

- Our flagship door has proven durability for long-life and heavy traffic; robust construction that ensures years of reliable performance.
- Door Air Shield Technology for advanced Anticondensate Sweat Protection.
- 3-pane, non-heated, low-E glass with argon gas. Heated Door* & Frame Rail (*Low Temp applications)
- Lifeplus Gasket® with 3-year parts and 1-year labor warranty.
- Hold-open feature allows easy stocking and shoppers easy access to all of the merchandise.
- 87° Door stop feature limits how far the door opens to minimize impact with adjacent doors and shoppers.
- Available in single or French swing door options.
- Energy-saving Optimax 7 Series LED lights for enhanced illumination.

SHOWN ABOVE

Silver Serrated 101 Series with Slimline Handle with optional cylinder door locks

RUGGED & ROBUST



Normal & Low
Temp



AIR SHIELD

SIZES AVAILABLE

NORMAL TEMP

3-PANE GLASS PACK W/ ARGON GAS
75°F, **65% RH** AMBIENT / 35°F WALK-IN

24" W x 62" T	24" W x 72" T	28" W x 75" T
26" W x 63" T	24" W x 73" T	30" W x 75" T
30" W x 63" T	26" W x 73" T	36" W x 75" T
33" W x 63" T	28" W x 73" T	24" W x 79" T
24" W x 67" T	30" W x 73" T	26" W x 79" T
26" W x 67" T	36" W x 73" T	28" W x 79" T
28" W x 67" T	24" W x 75" T	30" W x 79" T
30" W x 67" T	26" W x 75" T	36" W x 79" T

LOW TEMP

3-PANE GLASS PACK W/ ARGON GAS
75°F, **65% RH** AMBIENT / -10°F WALK-IN

24" W x 62" T	24" W x 72" T	28" W x 75" T
26" W x 63" T	24" W x 73" T	30" W x 75" T
30" W x 63" T	26" W x 73" T	36" W x 75" T
33" W x 63" T	28" W x 73" T	24" W x 79" T
24" W x 67" T	30" W x 73" T	26" W x 79" T
26" W x 67" T	36" W x 73" T	28" W x 79" T
28" W x 67" T	24" W x 75" T	30" W x 79" T
30" W x 67" T	26" W x 75" T	36" W x 79" T

GENUINE PROTECTION | GENUINE QUALITY | GENUINE RELIABILITY

INFINITY® 90 Series

Key Features

- Vista Arch Handle
- Infinity Edge Glass
 - 75°F, **65%RH** ambient/35°F Cooler
 - 75°F, **65%RH** ambient/-10°F Freezer
 - Optimax 7 Standard Power LED
 - 27" Deep Shelving
 - LifePlus Gasket® 3-year Warranty
 - French Swing Option

OPTIMIZED MERCHANDISING

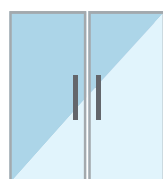


Normal & Low
Temp

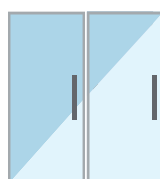
A contemporary, all-glass design incorporates an Infinity Edge for a superior, unobstructed display.

FEATURES / BENEFITS

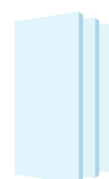
- Robust, aluminum door rails ensure years of reliable performance.
- A slim, 1.28" masking provides a stylish all-glass design with large viewing area.
- Door Air Shield Technology for advanced Anti-condensate Sweat Protection.
- 3-pane, 1.25" thick glass pack.
- Heated Door* & Frame Rail (*Low Temp applications)
- LifePlus Gasket® with 3-year parts and 1-year labor warranty.
- Hold-open feature allows easy stocking and shoppers easy access to merchandise.
- 87° Door stop feature limits how far the door opens to minimize impact with adjacent doors and shoppers.
- Energy-saving Optimax 7 Series LED lights for enhanced illumination.



Infinity Edge
French Door



Infinity Edge
Standard Swing



3-Pane
Glass Pack

OPTIONS / UPGRADES

- Matching Pass-Thru Door Available
- Optimax 7 French Swing LEDs (for French Swing Applications Only)
- Full-Length Handle
- Cylinder Lock
- Electronic Auto-Lock
- Anti-Fog Add-On
- Double-Wide Shelving
- Gravity Flow Shelving
- Gravity Flow Merchandising
- Roll-A-Way Cart Options



SIZES AVAILABLE

NORMAL TEMP

3-PANE GLASS PACK W/ ARGON GAS
75°F, 65% RH AMBIENT / 35°F WALK-IN

30" W x 67" T	24" W x 79" T
24" W x 75" T	26" W x 79" T
26" W x 75" T	28" W x 79" T
28" W x 75" T	30" W x 79" T
30" W x 75" T	

LOW TEMP

3-PANE GLASS PACK W/ ARGON GAS
75°F, 65% RH AMBIENT / -10°F WALK-IN

30" W x 67" T	24" W x 79" T
24" W x 75" T	26" W x 79" T
26" W x 75" T	28" W x 79" T
28" W x 75" T	30" W x 79" T
30" W x 75" T	

SHOWN ON LEFT

Silver Infinity 90 Series
with Vista Arch Handle
and Cylinder Locks

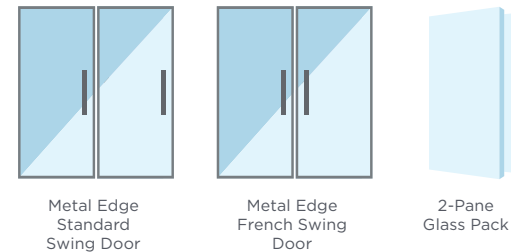
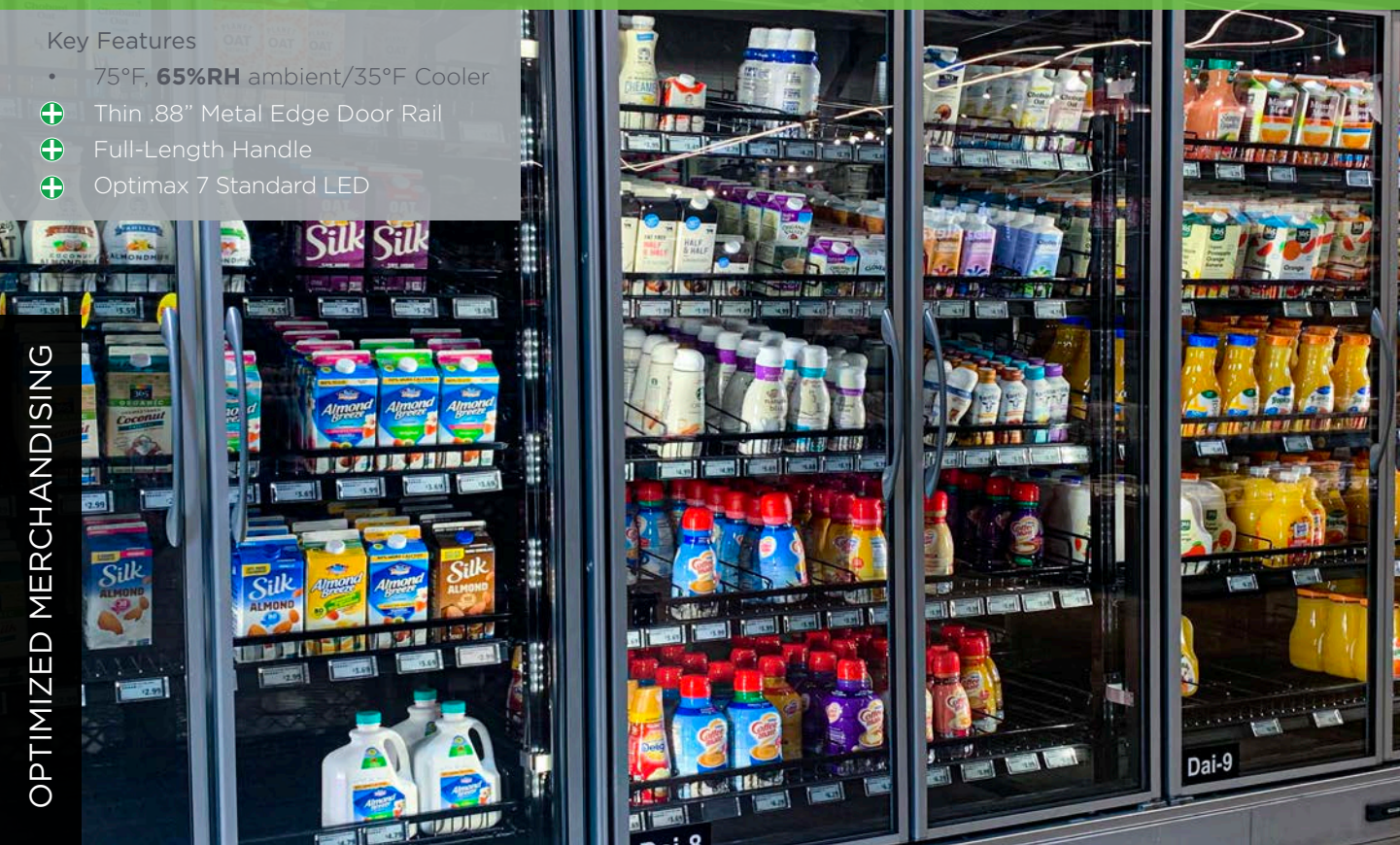
VISTA® C Series

2017
DOE
COMPLIANT

Key Features

- 75°F, **65%RH** ambient/35°F Cooler
- + Thin .88" Metal Edge Door Rail
- + Full-Length Handle
- + Optimax 7 Standard LED

OPTIMIZED MERCHANDISING



FEATURES / BENEFITS

- Energy-free doors deliver optimal cost savings.
- The design makes the most of thin 0.88", 2-pane, argon-filled, non-heated, low-E glass.
- Narrow, full-wrap aluminum door rails, improve shoppers' visibility and access.
- Hold-open feature allows easy stocking and shoppers easy access to merchandise.
- 87° Door stop feature limits how far the door opens to minimize impact with adjacent doors and shoppers.
- Energy-saving Optimax 7 Series LED lights for enhanced illumination.

SHOWN ABOVE

Silver Vista C Series French Swing with Vista Arch Handle

SIZES AVAILABLE

NORMAL TEMP

2-PANE GLASS PACK W/ ARGON GAS
75°F, 65% RH AMBIENT / 35°F WALK-IN

- 24" W x 67" T
- 30" W x 67" T
- 24" W x 75" T
- 26" W x 75" T
- 30" W x 75" T
- 36" W x 75" T
- 24" W x 79" T
- 30" W x 79" T

Vista® C door provides a sleek design that offers high visibility with extreme convenience.

OPTIONS / UPGRADES

- Anti-Fog
- Vista Arch Handle
- POM Lock
(Not Available with Full-Length Handle)
- Double-Wide Shelving
- Gravity Flow Shelving
- Gravity Flow Merchandising
- Roll-A-Way Cart Options



Normal
Temp

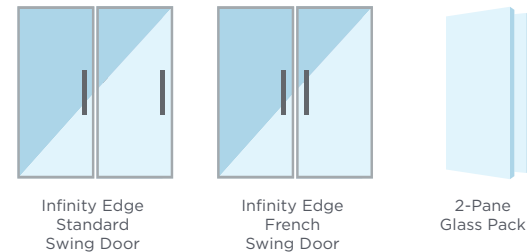
INFINITY® 60 Series

2017
DOE
COMPLIANT

Key Features

- 75°F, **65%RH** ambient/35°F Cooler
- Vista Arch Handle
- Optimax 7 Standard Power LED
- + Infinity Edge Glass

OPTIMIZED MERCHANDISING



FEATURES / BENEFITS

- Aluminum door rails ensure years of reliable performance and additional energy efficiency.
- 2-pane, non-heated, low-E glass pack; 0.62" thick with argon gas.
- Hold-open feature allows easy stocking and shoppers easy access to all of the merchandise.
- Ultra-thin, 0.60" Infinity Edge All-Glass-Look, all-glass doors, thin Vista handle increase product visibility and shopper access to merchandise.
- 87° Door stop feature limits how far the door opens to minimize impact with adjacent doors and shoppers.
- Available in French swing applications.
- Energy-saving Optimax **7** Series LED lights for enhanced illumination.

SHOWN ABOVE

Silver Infinity 60 Series French Swing with Vista Arch Handle

SIZES AVAILABLE

NORMAL TEMP

2-PANE LOW E GLASS PACK W/ ARGON GAS
75°F, **65% RH** AMBIENT/ 35°F WALK-IN

24" W x 55" T	28" W x 73" T
24" W x 58" T	28" W x 75" T
24" W x 67" T	28" W x 79" T
24" W x 75" T	30" W x 67" T
24" W x 79" T	30" W x 75" T
24" W x 81" T	30" W x 79" T
26" W x 75" T	36" W x 75" T
	36" W x 79" T

This Infinity Edge design maximizes product visibility for a friendlier, more accessible shopper experience.

OPTIONS / UPGRADES

- Anti-Fog
- Frame-Mounted Cylinder Lock (2 Locks Per Door)
- POM Lock
- Double-Wide Shelving
- Gravity Flow Shelving
- Gravity Flow Merchandising
- Roll-A-Way Cart Options

GENUINE PROTECTION | GENUINE QUALITY | GENUINE RELIABILITY

Automatic Beer Cave Door Series

OPTIMIZED MERCHANDISING



Modernize the Cave with Maximum Merchandise Visibility

Anthony has partnered with Horton Automatics®, for our all-new Automatic Beer Cave Door for Walk-In Cooler applications. Our new Automatic Beer Cave Door features a motion sensor on the interior and exterior of the door, allowing for easy two-way traffic, and a newly released Heavy Duty drive train tested to 1,000,000 cycles - the ideal mix of durability and merchandise visibility. Every Anthony Automatic Beer Cave Door also includes a Full-Service Installation by a Horton Certified Dealer - taking the guesswork out of whether your Beer Cave door is installed properly.



Normal
Temp

AVAILABLE IN

Normal Temperature
75°F, **55%RH** ambient/35°F Cooler

STANDARD FEATURES

- DOE Listing & ETL Listed for Safety
- Single Door Sizes:
7' W x 91" T, 8' W x 91" T, 9' W x 91" T
- Double Door Sizes:
9' W x 91" T, 10' W x 91" T, 12' W x 91" T
- Heavy Duty Drive Train Tested to 1,000,000 Cycles
- Attractive 4.5"x 7" Header with attached Motion Sensors at Interior and Exterior for Two-Way Traffic
- Three-Pane Non-Heated Low-E Glass with Argon Gas
- **Black or Satin Silver**
- Anthony Energy Controller Pre-Wired to Frame
- Industrial Grade Cylinder Lock with Internal Thumb Lock
- Easily Adjustable Opening & Closing Speeds
- Manual Operation Mode in Case of Power Failure
- Header Mounted Fail Safe/Bypass Switch
- Surface Mounted Fail Safe/Bypass Switch (field installed at customer discretion)

OPTIONS / UPGRADES

- Wireless Radio Control Activation
- Stainless Steel Wall Plate Push Buttons Manual Activation

APPLICATIONS

- Walk-In Coolers
- Beer Caves

STANDARD FINISH OPTIONS

- Black
- Satin Silver

STANDARD DOOR HANDLE OPTIONS

- Offset Handle in Black
- Offset Handle in Satin Silver

STANDARD FEATURES

- 75°F, 55%RH ambient/35°F Walk-In Anti-Condensate Sweat Protection
- Push Bar
- Self Closing
- Hydraulic Door Closure
- 2-Pane Non-Heated Low-E Glass with Argon Gas
- Industrial Grade Cylinder Lock with Internal Thumb-lock
- Top & Bottom Flush-bolt Locks Standard with Double Doors

OPTIONS / UPGRADES

- 10" tall Aluminum Diamond Pattern Kickplate
- Electronic Auto Lock*
- Panic Bar with Electronic Lock**

SIZES AVAILABLE

Configurations	Sizes
Single Door	32 X 81
	36 X 81
	36 X 84
Double Door	36 X 81
	36 X 84

SHOWN RIGHT

Double Door Kodiak
In Black Finish w/ Push Bar

***Single Door Only.** Kodiak Auto Lock Option comes standard with two Auto lock mechanisms fully integrated per door. Kodiak Auto Lock Option is In addition to Standard Industrial Grade Cylinder Lock.

****Single Door Only.** Industrial Grade Cylinder Lock Not Included when Panic Bar Selected



PASS-THRU Doors

Anthony Pass-Thru doors are 2017 D.O.E. compliant and designed to match your door lineups. They are sturdy, attractive, and provide easy access to your walk-in coolers. For increased sales volume in walk-in coolers, additional beer, beverage or deli items can be merchandised behind the Pass-Thru door. Anthony's Roll-A-Way Beverage cart is rolled back and out of the way for access to the cooler. When the door is not in use, the Roll-A-Way is pulled back up behind the glass door, with wheels locked, increasing your merchandising display area.

AVAILABLE IN

- Normal Temperature
75°F, **65%RH** ambient/35°F Cooler

AVAILABLE ON MODELS

- 401 Series (75°F, **55%RH** ambient/35°F Cooler)
- 101 Series
- Infinity 90 Series

STANDARD FEATURES

- 1-2 Door Frame Sections Only
- 2 Door Frame Sections No Center Mullion (French Swing) Only
- Variety of Finishes and Handles to Match
- Bottom frame threshold
- Door Air Shield Technology for advanced Anti-condensate Sweat Protection
- 87° Automatic hold-open provides shoppers with easy access to merchandise and allows for easy stocking
- Door stop feature limits how far the door opens to minimize impact with adjacent doors and shoppers.
- Standard finishes and handles to match reach-in doors
- Adjustable vinyl wiper seals
- TorqueMaster™ for door sag and tension adjustment
- 38" X 81" size Built in line with ADA Standards

OPTIONS / UPGRADES

- Optimax **7** Series LED Lighting
- Anti-Fog Optional
- Heavy Duty Hinging (101 Series Only)
- Bumper Bar
- Round Push Bar
- 1/3 Glass, 2/3 Solid Panel Options
(401 and 101 Series Only)
- No Bottom Frame Threshold Option
- Full Length Handles
- Electronic Door Locks
(1 Door Frame Sections Only)
- Cylinder Lock (1 Door Frame Sections Only)
- POM Lock (Not Available with Full Length Handle)
- Diamond Plate or Stainless Steel Kick Plate 10" High
- Roll-A-Way Carts



NORMAL TEMP
GLASS PACK W/ ARGON GAS 75°F, 55% RH AMBIENT / 35°F WALK-IN
401 Series
38x81
36x81
30x81

NORMAL TEMP	
GLASS PACK W/ ARGON GAS 75°F, 65% RH AMBIENT / 35°F WALK-IN	
101 Series	Infinity 90 Series
38x81	36x85
36x85	36x84
36x84	35x84
36x81	38x81
35x84	36x81
	30x81

SHOWN RIGHT
Black 101 Series
Pass-Thru Door with Push Bar

DOOR SELECTION GUIDE

	Normal Temp					Low Temp		
	401 Series	101 Series	Infinity 90	Infinity 60	Vista C	401 Series	101 Series	Infinity 90
Application								
Cooler	Yes	Yes	Yes	Yes	Yes			
Freezer						Yes	Yes	Yes
Pass-Thru	Yes	Yes	Yes					
Heavy-Duty Beer Cave		Optional						
Category								
Rugged & Robust	Yes	Yes	Yes			Yes	Yes	Yes
Optimized Merchandising			Yes	Yes	Yes			Yes
Temperature/Environment/Door Heat								
Normal Temp: 75°F, 55% RH Ambient/ 35°F Walk-In	Yes							
Low Temp: 75°F, 55% RH Ambient/ -10°F Walk-In						Yes		
Normal Temp: 75°F, 65% RH Ambient/ 35°F Walk-In		Yes	Yes	Yes	Yes			
Low Temp: 75°F, 65% RH Ambient/ -10°F Walk-In							Yes	Yes
Energy Consumption*								
Normal Temperature	3.30 kWh/Day	3.20 kWh/Day	3.20 kWh/Day	4.10 kWh/Day	3.58 kWh/Day			
Low Temperature						9.26 kWh/Day	10.01 kWh/Day	10.05 kWh/Day
*Energy consumption values listed are actual values and are based on a catalog size 30" x 75", 4 door line up								
Standard Package Options								
Energy Controller	Yes	Yes	Yes	Yes	Yes	Yes	Yes	Yes
Magnetic Door Gaskets	Yes	Yes	Yes			Yes	Yes	Yes
Aircell PVC Gasket	Standard			Standard	Standard	Standard		
LifePlus Gasket*		Standard	Standard				Standard	Standard
Automatic Hold-Open & Door Stop	Yes	Yes	Yes	Yes	Yes	Yes	Yes	Yes
Hinge Pin	Yes	Yes	Yes	Yes	Yes	Yes	Yes	Yes
Torque & Sag Adjust	Yes	Yes	Yes	Yes	Yes	Yes	Yes	Yes
Reversible Door	Yes	Yes	Yes		Yes	Yes	Yes	Yes
Door Handle	Trimline	Slimline	Vista Arch	Vista Arch	Full Length	Trimline	Slimline	Vista Arch
Full-Length Handle	Optional	Optional	Optional		Standard	Optional	Optional	Optional
Lighting Options								
Lighting - Optimax 7 Low Power	Standard					Standard		
Lighting - Optimax 7 Standard Power	Optional	Standard	Standard	Standard	Standard	Optional	Standard	Standard
Lighting - Optimax 7 French Swing		Optional	Optional	Optional	Optional			
Swing Availability								
Standard L/R	Standard	Standard	Standard	Standard	Standard	Standard	Standard	Standard
French Swing without Center Mullion		Optional	Optional	Optional	Optional			

	Normal Temp					Low Temp		
	401 Series	101 Series	Infinity 90	Infinity 60	Vista C	401 Series	101 Series	Infinity 90
Application Category								
Rugged & Robust	Yes	Yes				Yes	Yes	Both
Optimized Merchandising			Yes	Yes	Yes			
Door Sizes*								
Widths (inches)	24, 26, 28, & 30	24, 26, 28, 30, 33 & 36	24, 26, 28, & 30	24, 26, 28, 30, & 36	24, 26, 30, & 36	24, 26, 28, 30, 33, & 36	24, 26, 28, 30, & 36	24, 26, 28, 30, 33, & 36
Heights (inches)	67, 75, & 79	62, 63, 67, 72, 73, 75, & 79	67, 75 & 79	55, 58, 67, 73, 75, 79, & 81	67, 75, & 79	62, 63, 67, 73, 75, & 79	62, 63, 67, 73, 75, & 79	62, 63, 67, 73, 75, & 79
Rail Finishes								
Smooth or Serrated Silver	ONLY SMOOTH SILVER	Yes				ONLY SMOOTH SILVER	Yes	
Smooth or Serrated Gold	Yes	Yes				Yes	Yes	
Satin Silver	Upgrade	Upgrade	Yes	Yes	Yes	Upgrade	Upgrade	Yes
Black	Yes	Yes	Yes	Yes	Yes	Yes	Yes	Yes
Door Rail Attributes								
Glass Pack	2-Pane	3-Panes	3-Panes	2-Panes	2-Panes	3-Panes	3-Panes	3-Panes
Rail Material	Aluminum	Aluminum	Aluminum	Aluminum	Aluminum	Aluminum	Aluminum	Aluminum
Rail Design	Decorator	Decorator or Flat	Infinity Edge	Infinity Edge	U-Shaped	Decorator	Decorator or Flat	Infinity Edge
Door Rail Width (glass masking)	1.50"	1.50"	1.28"	0.625"	1.0"	1.50"	1.50"	1.28"
Door Handle Options								
Trimline	Standard					Standard		
Slimline		Standard					Standard	
Vista Arch			Standard	Standard	Upgrade			Standard
Soft Touch		Upgrade					Upgrade	
Full Length	Upgrade	Upgrade	Upgrade		Standard	Upgrade	Upgrade	Upgrade
Additional Options								
Anti-Fog Film	Upgrade	Upgrade	Upgrade	Upgrade	Upgrade	Upgrade	Upgrade	Upgrade
Matching Pass-Thru	Yes	Yes	Yes					
Lock Options								
Cylinder Lock	Upgrade	Upgrade	Upgrade			Upgrade	Upgrade	Upgrade
POM Lock	Upgrade	Upgrade	Upgrade	Upgrade	Upgrade	Upgrade	Upgrade	Upgrade
Automatic Door Lock	Upgrade	Upgrade	Upgrade			Upgrade	Upgrade	Upgrade
Frame-mounted Cylinder Lock				Upgrade				

DOOR OPTIONS

Customize your Reach-In to meet your energy needs, and pick the perfect handle and door rail finishes to match your store.

Door Handle Options

Trimline Handle Options



Black



Gold/Black



Black/Grey



Smooth Silver/Grey



Gold/Grey



Satin Silver/Grey

Slimline Handle Options



Black



Polished Gold



Silver Satin



Polished Silver

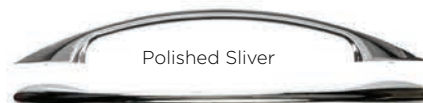
Vista Arch Handle Options



Black



Silver Satin



Polished Silver

Soft-touch Handle



Black



Full-length Handle

Door Rail Finishes



Pass-Thru Door Add-On Options



Bumper Bar



Round Push Bar



Diamond Pattern
Kick Plate



Heavy Duty
Hinging
(for 101 Pass-Thru only)

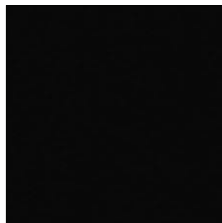


Adjustable
Wiper Seals

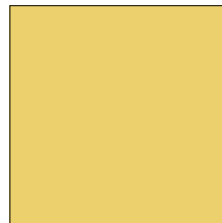
Pass-Thru Solid Panel and Kick Plate Finish Options



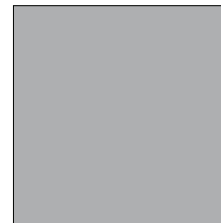
White Formica



Black Formica



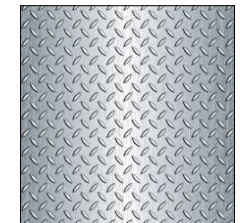
Gold Formica



Silver Formica



Stainless Steel



Diamond Plate

Note: Kick-plates will only be limited to Stainless Steel & Diamond Pattern Only. Formica Color Options are limited to 2/3 Solid Panel Option Only.



LIGHTING

Typically, the last step is to beautifully display merchandise that engages the shopper, enhances the store experience and increases store profitability.

Selecting the right lighting is a crucial decision point in the visual merchandising process. Anthony offers best-in-class lighting, uniformity and high-color rendering that improves product visibility.

Maximize your merchandising effectiveness with our latest lighting technologies; Optimax 7 LED Series or our Clearvoyant® LED System.



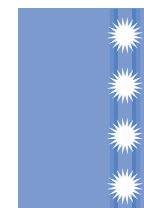
SHOWN LEFT
Silver Infinity 90 Low Temp



SHOWN ABOVE
Optimax 7 French Swing & Optimax 7 Standard Power

OPTIMAX 7 Series LED Lighting

optimax 7 LED Series



Vertical
Lighting

Take optimizing your merchandise to a New Level, with our new Optimax 7 Series LED Refrigerated Case Lighting. The Optimax 7 Series is specifically designed to optimize your merchandise and increase cold-vault sales, this new series features best-in-class uniformity and high color rendering for enhanced product visibility, color saturation, and clarity.

Many manufacturers focus only on Lumen output, here at Anthony we know that to achieve superior lighting optimizing all aspects and values, such as Lumen output, CRI, and LUX incident on target area are key to achieving the best light to optimize your merchandise.

APPLICATIONS

- Designed for normal and low temperature refrigeration walk-ins and display case applications.
- Ideal for C-Stores, Grocery, and Big Box Retailers.

MODEL OPTIONS

- **Optimax™ 7 Series - Low Power**
Our entry level and most economical offering for our 401 Door Series available in limited sizes in an 4000°K Color Temperature.
- **Optimax™ 7 Series - Standard Power**
Our Standard Power option is designed specifically for Single Swing door applications for walk-in and reach-In case applications.
- **Optimax™ 7 Series - French Swing**
Our French Swing option is designed specifically for French opening applications for walk-in and reach-In case applications.

SHOWN ON LEFT

Infinity 90 Silver Satin with Vista Arch Handle.



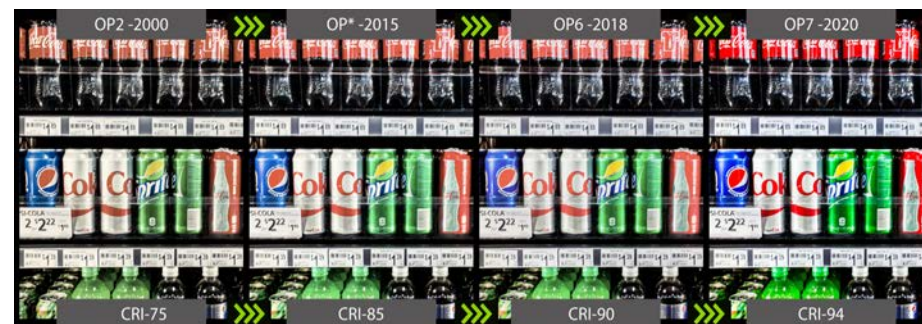
UNPARALLELED PERFORMANCE & FEATURES

- Vertical mullion lighting and optic packages designed for both Single swing and French swing door applications.
- Continued Best-In-Class Lighting Distribution
- Improved Merchandise Color Rendering - R9 of 72
- Improved Long-Term Reliability & Short Lead Times
- Improved Efficacy - Lumens/Watts
- New longer LED Fixtures on Taller Doors for Improved Lighting Distribution
- Minimized direct light to shopper
- High-color saturation with natural white light color.
- >100,000-hour L70 life cycle for long-term reliability.
- >54,000-hour L90 life cycle for long-term reliability.
- 24V constant-voltage power supply.
- Available in 3500K or 4000K
- DLC Listed
- Dimming Option is DLC Premium Listed

Light Fixture Nominal Size	LOW POWER - LP	STANDARD POWER - SP	FRENCH SWING - FS
36	N/A	N/A	YES - 3500K
48	N/A	N/A	YES - 3500K, 4000K
54	N/A	YES - 3500K, 4000K	YES - 3500K, 4000K
59	N/A	YES - 3500K, 4000K	YES - 3500K, 4000K
60	YES - 4000K	YES - 3500K, 4000K	YES - 3500K, 4000K
72	YES - 4000K	YES - 3500K, 4000K	YES - 3500K, 4000K
75	N/A	YES - 3500K, 4000K	YES - 3500K, 4000K
79	N/A	YES - 3500K, 4000K	YES - 3500K, 4000K



TRUE COLOR RENDERING



Our New Optimax 7 Series LED is second to none when it comes to achieving best-in-class uniformity and high color rendering that creates improved product visibility. Our new Optimax 7 Series LED achieves a CRI of 94 making your merchandise “POP” with clear, vivid, vibrant, and as close to natural light (CRI 100) as possible. As you can see above her at Anthony have made tremendous improvements in LED lighting over the years and are proud and excited for the newest LED the Optimax 7 Series.

UNIFORMITY, & COLOR RENDERING



Anthony's Optimax 7 Series LED lights now offer longer fixtures for our taller door sizes (Size 75 or Taller) to ensure maximum coverage both from side to side and top to bottom, (see images above) eliminating light drop-off and reducing hot-spots. Our newest Optimax 7 Series LEDs have been designed with an optimal brightness that is consistent and uniform to maximize your ability to optimally merchandise your products.

Maximize Door Life, Minimize Costs

LifePlus Gasket® provides superior sealing performance and longer life compared to standard PVC gaskets to better lock in refrigerated air and save on energy costs. Made of long-lasting polymer, LifePlus Gasket® retains tight sealing performance throughout repeated thermal changes, including anti-condensate heat cycles, and door openings and closings. LifePlus Gasket offers greater energy efficiency and lowers operating costs by extending gasket life and decreasing the need for maintenance.

- 1-year labor, and 3-year parts replacement warranty
- Increases door gasket life by over 100%
- Last up to 5x longer than conventional PVC gaskets on the market
- Excellent door sealing performance at low temperatures
- Enhanced customer shopping experience by eliminating air leakage
- Reduced maintenance costs



Applications:

- Cooler and Freezer
- Retrofits onto All Anthony Doors with Aircell PVC Door Gasket

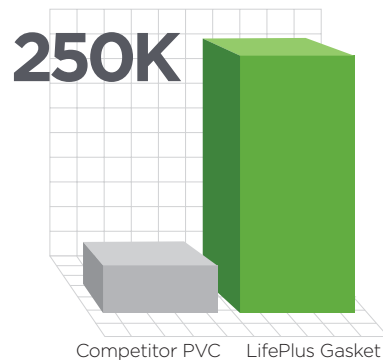
Standard Features:

- Magnetic Door Gasket for Tight Seal
- 1-Year Labor, 3-Year Parts Warranty
- UL & cUL Compliant

Standard on Anthony Models:

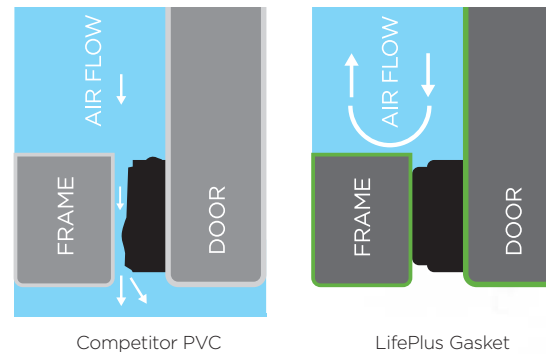
- 101
- Infinity 90

5X Longer Lasting



Number of cycles LifePlus Gasket can experience without wear and tear. 5x the life of traditional gaskets.

Material Construction



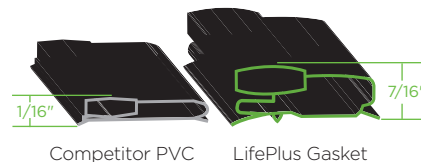
Material properties have a higher resistance to fatigue, providing longer gasket life, energy savings and reduced air leakage.

Thermal Stability



Maintains a tight door seal regardless of door thermal cycling, saving energy by reduced air leakage.

Bellow Thickness



Absorbs door slam shock, lengthening life of doors and door hardware.

Warranty



LifePlus Gasket is covered against defects for 3 years vs. competitor's 30 days.

Standard Flat Shelving

Anthony's Flat Shelving is standard with all Anthony door models. The shelving is strong, sturdy, and easily installed without any special tools.

Standard Features

- Ease of installation and repositioning
- Epoxy coated
- Adjustable post height
- Decorative matching price tag molding
- Available in White or Black Finishes

Accessories

- Shelf posts
- Post retaining bracket
- Wall mounting bracket
- Side product stops
- Shelf stabilizer bar
- Plastic price tag molding
- Metal price tag molding

Standard Flat Shelving Sizes

Rear Entry Shelf Depths: 24", 27", 36"
Door Widths: 23", 24", 26", 28", 30"
- Load strength up to 200 lbs per shelf

Upgrade to Heavy Duty Flat Shelving Sizes

Rear entry shelf depths: 24", 27", 36"
Door widths: 23", 24", 26", 28", 30"
- Load strength up to 300 lbs per shelf



Double-Wide Shelving

Anthony's Double-Wide Shelving is an option for your French-style opening door applications. The shelving is strong, sturdy and easily installed without any special tools.



Standard Features

- Made for French-style doors
- Ease of installation and repositioning
- Epoxy-coated
- Matching single-Wide shelving
- Adjustable post height
- Decorative matching price tag molding
- Available in white or black finishes

Accessories

- Shelf posts
- Post retaining bracket
- Wall mounting bracket
- Side product stops
- Shelf stabilizer bar
- Plastic price tag molding
- Metal price tag molding

Options

- Shelf dividers
- Shelf LEDs

Double-Wide Flat Shelving

Rear entry shelf depths: 24", 27", & 36"
Door widths: 48", 52", 56", & 60"
- Load strength up to 300 lbs per shelf

Single-Wide Flat Shelving

Rear entry shelf depths: 24", 27", & 36"
Door widths: 24", 26", 28", & 30"
- Load strength up to 200 lbs per shelf

Gravity Flow Shelving

Anthony's Gravity Flow Shelving allows the display and promotion of products in any order, with fully adjustable shelves, lane dividers and front product stops which provides merchandise organization without using tools. Our GFS line accommodates a full range of product sizes, in any configuration, with products sliding forward for constant rotation.

Standard Features

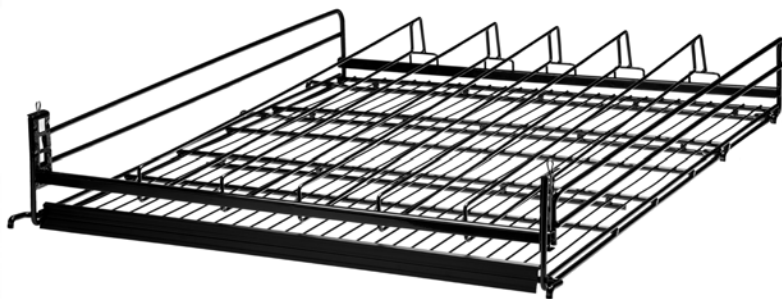
- Merchandise organization
- Glide sheet provides easy clean up
- Adjustable front stop
- Allows self-fronting of products
- Epoxy-coated
- Uses standard posts up to 86"
- Adjustable post height
- Decorative matching price tag molding
- Available in white or black finishes

Accessories

- Heavy-duty rollers for heavy products
- Shelf posts
- Post retaining bracket
- Wall mounting bracket
- Side product stops
- Shelf stabilizer bar
- Plastic price tag molding
- Metal price tag molding

Gravity Flow Shelving

Rear entry shelf depths: 24", 27", 36", & 42"
Door widths: 24", 26", 28", & 30"
- Load strength up to 500 lbs per shelf



Gravity Flow Merchandiser

Anthony's Gravity Flow Merchandiser has all the same features as our Gravity Flow Merchandiser but adds a wider range of depths.



Standard Features

- Merchandise organization
- Dividers included
- Adjustable front stop
- Allows self-fronting of products
- Epoxy-coated
- Depths from 42" up to 72"
- Adjustable post height
- Decorative matching price tag molding
- Available in white or black finishes

Accessories

- Heavy-duty rollers for heavy products
- Shelf posts
- Post retaining bracket
- Wall mounting bracket
- Side product stops
- Shelf stabilizer bar
- Plastic price tag molding
- Metal price tag molding

Gravity Flow Merchandiser

Rear entry shelf depths: 42", 48", 60", & 72"
Door widths: 24", 26", 28", 30", & 36"
- Load strength up to 500 lbs per shelf

Corner Shelving

Anthony shelving corners the market on simplicity and efficiency for two-sided coolers. Available in four standard sizes, Anthony corner shelving greatly reduces the time and expense necessary to process custom orders. Anthony corner shelves are engineered to solve any corner shelf problem with ease.

Standard Features

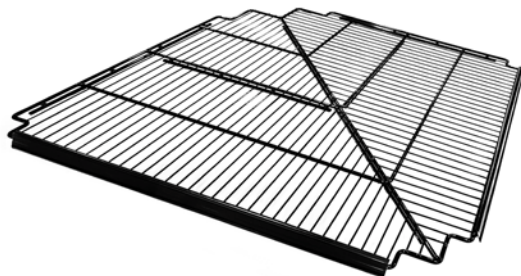
- Ease of installation and repositioning
- Epoxy-coated
- Adjustable post height
- Decorative matching price tag molding
- Available in white or black finishes

Accessories

- Shelf posts
- Post retaining bracket
- Wall mounting bracket
- Side product stops
- Shelf stabilizer bar
- Plastic price tag molding
- Metal price tag molding

Flat Corner Shelving

Corner shelf depths: 24", & 27"
Door widths: 24", 26", 28", & 30"
- Load strength up to 300 lbs per shelf



Specialty Shelving

Deli-Vue Shelving

- Full Deli-Vue Shelving
- Half Deli-Vue Shelving
- Adjustable Hooks

Additional Shelving Options & Accessories

- Drip Pans
- Basket Shelves
- Side Product Stops
- Clip-On Vertical Can Dividers
- Shelf Stabilizer Bars
- Single Hook Lane Dividers
- Glide Sheets
- Various Product Dividers
- Adjustable Front Product Stop Rail
- Metal Price Tag Molding
- Heavy-Duty PVC Case Rollers
- Floor Shield
- Wall Mounting Brackets
- Post Retainer Brackets



Heavy-Duty PVC Case Rollers



Product Stops



Glide Sheets



Basket Shelves



Drip Pans

MINI-ROLLER SYSTEM

Boost shelving capacity, product sales and restocking efficiency by adding Mini-Roller Systems onto new or existing wire shelves. The Mini-Roller Systems complete the line up for engaging product visibility, perfect well lit presentation and improved food safety ensured by Anthony glass doors. Anthony is the single source for all of your Mini-Roller System, shelving, lighting and merchandising needs.

Driven by gravity, the Mini-Roller System is a one-piece, roller shelf surface that enables multiple-sized facings on the same shelf to slide smoothly and independently to the front of the shelf as items are removed. Ideal for single-serve beverages, the Mini-Roller System also provides labor cost savings by facilitating quick product resets and stocking. Easy to assemble and install in new and existing coolers with extreme flexibility for fast configuration changes.

Standard Features

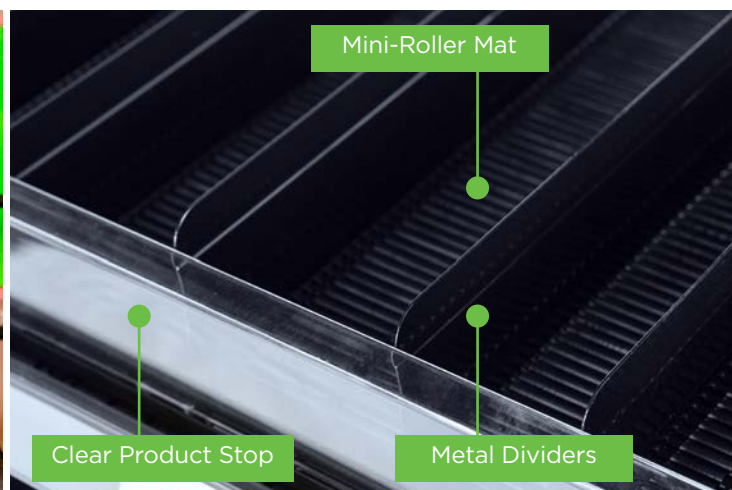
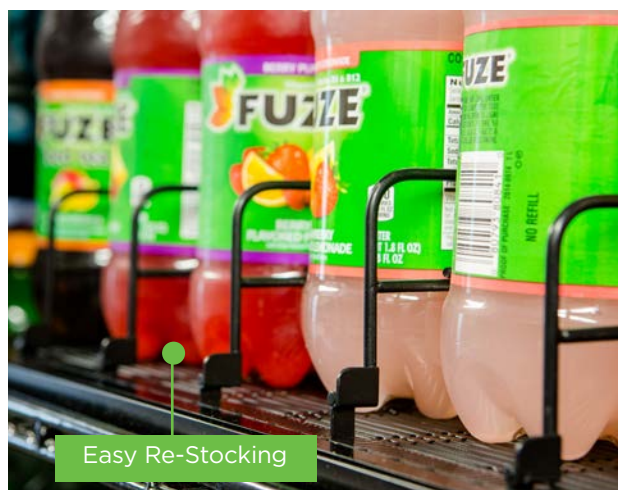
- Dividers and clear acrylic front stop easily snap in for different product facings with multiple configurations to fit your needs
- Speeds restocking for labor savings
- No tools required for easy installation
- Easy reconfiguration for merchandising resets

Mini-Roll Mats

Depths: 27", 36", 42", & 48"
Width: 30"

Standard Sizes & Colors

	SIZES (W X D)	PLACEMENT	COLOR	INCLUDES
KIT SELECTION	30" x 27"	Flat Wire Shelf	Black or White	Mini-Roller Mat - 1 each
	30" x 36"	Flat Wire Shelf	Black or White	3" Clear Product Stop - 1 ea
	30" x 42"	Gravity Flow Shelf	Black or White	3" Metal Divider - 8 ea
	30" x 48"	Gravity Flow Shelf	Black or White	5" Side Stop - 2 ea



ROLL-A-WAY CARTS

All shelving kits available in can be ordered in a Roll-A-Way Cart Configuration. These carts are perfect fit for dual use Pass-Thru Doors or Beer Cave applications



**Standard Flat Shelving
Roll-A-Way Cart**

76-1/2" Tall Cart

Rear entry shelf depths: 24", 27" & 37"
Door widths: 23", 24", 26", 28", 30", & 32"
- Load strength up to 500 lbs per shelf
- Available in white or black finishes



**Gravity Flow Shelving
Roll-A-Way Cart**

80" Tall Cart

Rear entry shelf depths: 24", & 27"
Door widths: 30"
- Load strength up to 500 lbs per Shelf
- Available in white or black finishes

**Gravity Flow Merchandiser
Roll-A-Way Cart**

88-3/4" Tall Cart

Rear entry shelf depths: 48", 60" & 72"
Door widths: 30"
- Load strength up to 500 lbs per shelf
- Available in white or black finishes



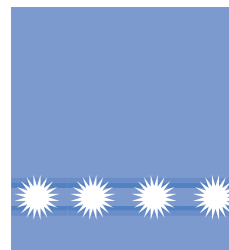
**Double-Wide,
Gravity Flow Shelving
Roll-A-Way Cart**

Cart depth: 36"
Cart width: 60"
- Load strength up to 500 lbs per Shelf
- Available in white or black finishes

CLEARVOYANT® Shelf LEDs



Clearvoyant LEDs brilliantly light products with natural color saturation without creating hotspots or shadows with the use of a frosted lens, adjustable fixture and expertly-designed lights engineered specifically for the application.



Horizontal
Lighting

FEATURES/ BENEFITS

- Horizontal LEDs designed for shelf lighting.
- Variable angle adjustment with positive detents for tuning the illumination on products.
- Diffused lens for ease on customers' eyes while reducing hot spots.
- Optimized lighting uniformity eliminates shadows.
- CRI ≥ 85 with a high R9.
- High-color saturation across all color spectrums.
- L85 rating of 60,000 hours.
- 24VDC for increased safety and reliability.
- UL, NSF, IP65, DLC listings.

Available in 4000K

SHOWN ON LEFT
Double-Wide Shelving with Clearvoyant LEDs



One source—so many options. Anthony is your one-stop, one-shop, and resource for all your cooler and freezer optimal merchandising needs. Whatever the application, it's clear the Anthony product line has both the breadth and depth to meet your exact requirements. Take advantage of the convenience and peace of mind that come from working with the industry leader. Call us at 800.722.0900 and open the door to Anthony.



three ways
to order
today

go to: www.anthonyintl.com
email: sales@anthonyintl.com
call: 800-772-0900



GENUINE PROTECTION | GENUINE QUALITY | GENUINE RELIABILITY