



# Why Anthony



## 401 Series



### Unique Selling Points:

- Uncommon Value for the Price
- Excellent Reliability
- Field Reversible with Durable Door Hold
- Hold-Open, Torque and Sag Adjust

### Key Features:

- Applications: Cooler, Freezer & Pass-Thru
- Glass: 2 Panes
- 75°F/55%RH @35°F Cooler, -10°F Freezer
- Trimline Handle
- Optimax 7 Low-Power LED
- 24" Deep Shelving
- Field Reversible

## 101 Series



### Unique Selling Points:

- High-Humidity Sweat Protection
- Industry-Leading Lighting Performance
- Proven Reliability & Durability for High-Volume Shopping

### Key Features:

- Applications: Cooler, Freezer & Pass-Thru
- Glass: Cooler, Freezer (3 Panes) Pass-Thru (2 Panes)
- Field Reversible
  - + 75°F/65%RH @35°F Cooler, -10°F Freezer
  - + Slimline Handle
  - + Optimax 7 Standard Power LED
  - + 27" Deep Shelving
  - + LifePlus Gasket®



## Infinity® 90



### Unique Selling Points:

- All-Glass Look
- Three-Pane Glass Pack with Excellent Reliability and Anti-Sweat Protection
- Sleek & Sturdy Vista Arch Handle

### Key Features:

- Applications: Cooler, Freezer & Pass-Thru
- Glass: 3 Panes
- 75°F/65%RH @35°F Cooler, -10°F Freezer
- Optimax 7 Standard-Power LED
- 27" Deep Shelving
- Field Reversible
- LifePlus Gasket®
  - + Vista Arch Handle
  - + Infinity Edge Painted Border

## Infinity® MAX



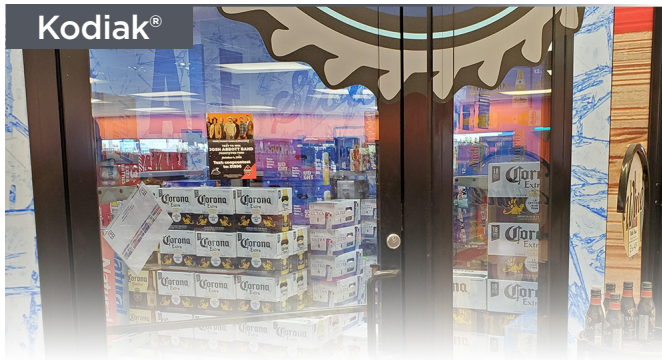
### Unique Selling Points:

- Maximum Visibility: No Mullions or Vertical Door Rails
- Maximum Sweat Protection: 75°F, 65%RH Ambient/ 35°F Walk-In
- Maximum Durability: Fully Aluminum Header & Sill

### Key Features:

- Applications: Cooler
- Glass: 2 Panes
- 75°F/65%RH @35°F Cooler
- Vista Arch Handle
  - + Optimax 7 Full Perimeter LED
  - + 27" Deep Double-Wide Shelving
  - + LifePlus Gasket®
  - + Thin (0.5") Infinity Edge Painted Border
  - + Integrated Hydraulic Door Close
  - + No Vertical Mullions or Door Rails

# Kodiak®



## Unique Selling Points:

- Heavy Duty Store-Front Like Door with Proven Durability
- 2.5x More Aluminum than Other Pass-Thru Doors
- Self-Closing Hydraulic Door Closure
- Only DOE-Listed Door in Its Class
- Various Lock Options Available

## Key Features:

- Application: Pass-Thru
- Glass: 2 Panes
- 75°F/55%RH @35°F Cooler
- Offset Handle
- Push Bar and Optional Panic Bar with Interior Release
- Self-Closing Hydraulic Door Closure
- Industrial Grade Cylinder Lock with Internal Thumb-Lock
- Top & Bottom Flush-Bolt Locks Standard with French Swing

## Automatic Beer Cave Door



## Unique Selling Points:

- Motion-Sensor-Activated Single or Double Door
- Full-Service Installation Included
- Door & Frame Rail Heat for Increased Anticondensate Sweat Protection

## Key Features:

- Application: Pass-Thru
- Glass: 3 Panes
- Integrated Motion Sensors at Interior and Exterior for Two-Way Traffic
- Heavy-Duty Drive Train Tested to 1,000,000 Cycles
- 75°F/55%RH @35°F Cooler
- Industrial-Grade Cylinder Lock with Internal Thumb Lock
- Manual Operation Mode in Case of Power Failure



## Why Anthony

### Setting the Standard in Door Innovation Since 1958

For over 60 years, Anthony has set the standard in door solutions trusted by retailers nationwide. Backed by a reputation built on performance and confidence, our comprehensive portfolio covers every application.

What makes us different? Speed without sacrificing quality. We deliver competitive lead times while maintaining the durability and energy efficiency that have made us an industry leader. When you choose Anthony, you're not just buying doors — you're selecting decades of proven innovation that retailers depend on today.

### Other Products Available

Windows  
1100/1150 Sliders  
Gravity Flow Shelving  
Rollaway Carts  
Mini Roller Mats



a **DOVER** company

three ways  
to order  
today

go to: [www.anthonymtl.com](http://www.anthonymtl.com)  
email: [sales@anthonymtl.com](mailto:sales@anthonymtl.com)  
call: 800-772-0900



**Hillphoenix**

**ADVANSOR**

THE **AMS** GROUP™