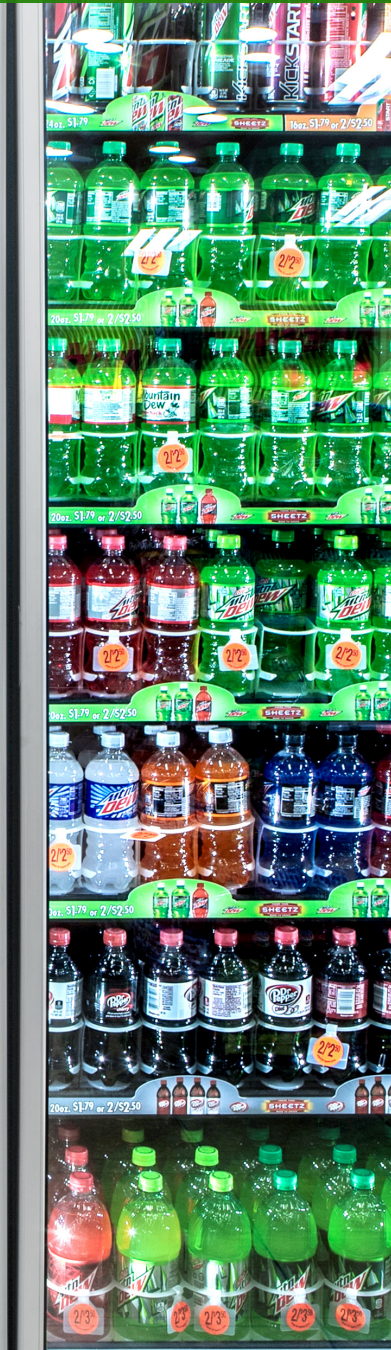


101 Series

INTERNATIONAL

COOLER AND FREEZER



Our 101 Series door has superior thermal protection against condensation, along with a wide range of options the 101 Series door delivers the quality and dependability, our customers have grown accustomed to with Anthony. The 101 Series delivers value and energy efficiency paired with proven durability and efficiency standards.

Built strong.
Built to last for heavy traffic



Anthony's 101 Series sets higher standards for energy efficiency and performance in cooler and freezer doors, with narrow door rails available for maximum product visibility. The 101 Series offers energy-free cooler and freezer doors with Low-E glass coating for additional energy savings! The 101 Series has been slam tested to 500,000 cycles.

Temperature:

- **Normal Temp-**

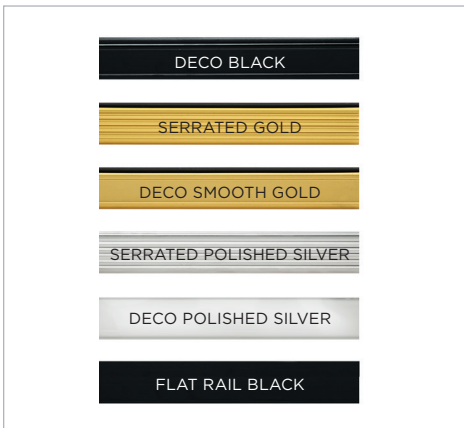
3-Pane Nonheated Low-E Glass Pack w/Argon
Gas 75°F, 65% RH Ambient/ 35°F Walk-In

- **Low Temp-**

3-Pane Nonheated Low-E Glass Pack w/Argon
Gas 75°F, 65% RH Ambient/ -10°F Walk-In

Applications:

- Walk-in
- Reach-in Case
- Pass-thru Option



Standard Door Rail Options



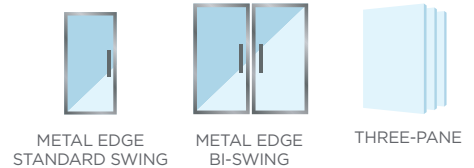
Standard Handle Options

Standard Features:

- Our flagship door has proven durability for long-life and heavy traffic; robust construction that ensures years of reliable performance
- NT: Heated Frame Rail
LT: Heated Door & Frame Rail
- Door comes 24", 26", 28", 30", and 36" bi-swing configuration available for walk-in coolers or reach-ins with or without center mullion
- Optimax 7 Standard Power LED Innovative Anthony lighting choices increase visual impact of product while reducing energy consumption
- Magnetic LifePlus Gasket® for Tight Seal with extended 3 year warranty
- Five 27" deep white or black epoxy-coated shelves per door with matching price tag molding, galvanized steel posts, and shelf brackets. 79" or taller doors include seven shelves per door.
- Reversible Door Swing
- Door stop feature limits how far the door opens to minimize impact with adjacent doors and shoppers
- Automatic hold-open provides shoppers with easy access to merchandise and allows for easy stocking
- Matching Pass-Thru 103B door in widths 30", 35", 36" and 38"

Optional Features & Upgrades:

- Pass-Thru Door
- Optimax 7 French Swing LED (for French Swing applications)
- Full-Length Handle
- Satin Silver Anodized Finish
- Cylinder Lock
- Electronic Auto Lock
- Anti-Fog
- Double Wide Shelving
- Extra Shelves
- Black/White Epoxy-Coated Shelf Posts
- Gravity Flow Shelving
- Gravity Flow Merchandising
- Roll-A-Way Cart
- Hotter Heat Door and Frame Rail



three ways
to order
today

go to: www.anthonyintl.com
email: sales@anthonyintl.com
call: 800-772-0900