

Upright (WM) Installation Instruction

99-16145-0000



Copyright © 2011 by

ALL rights reserved. Information in this document is subject to change without notice. Companies, names and data used in examples herein are fictitious unless otherwise noted. No part of this document may be reproduced or transmitted in any form or by any means, electronic or mechanical, for any purpose, without express permission of Anthony Manufacturing Co., Inc.

Anthony products identified in this manual are designed and certified to meet NFPA for safety, and ANSI for sanitation standards.

European products meet CE requirements.

Each customer is responsible for final site approval.

TABLE OF CONTENTS

1. Upright (WM) Installation Instruction.....	4
1.1. Locate Upright Assemblies.....	4
1.2. Engage Retainer Assemblies.....	4
1.3. Locate Upright Supports.....	5
1.4. Locate Socket Head Cap Screw.....	5
1.5. Locate Hex Nuts.....	5
1.6. Position Support.....	6
1.7. Insert Bolt.....	6
1.8. Thread Nut.....	6
1.9. Tighten Nut and Bolt.....	6
2. Revision History Page.....	7

1. Upright (WM) Installation Instruction

1.1. Locate Upright Assemblies

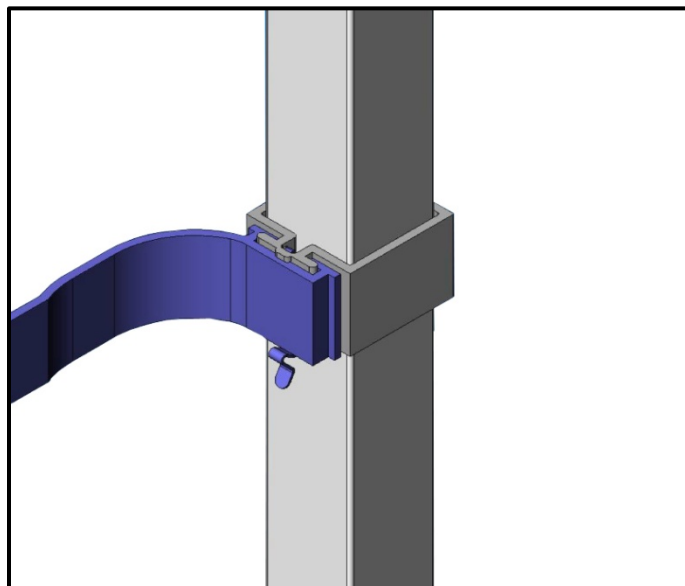
Locate upright assemblies 85-16124-XXXX.



GFS Welded Upright

1.2. Engage Retainer Assemblies

Engage each (two per upright) retainer assembly 80-15875-XXXX onto frame shelf bracket until spring clip snaps.

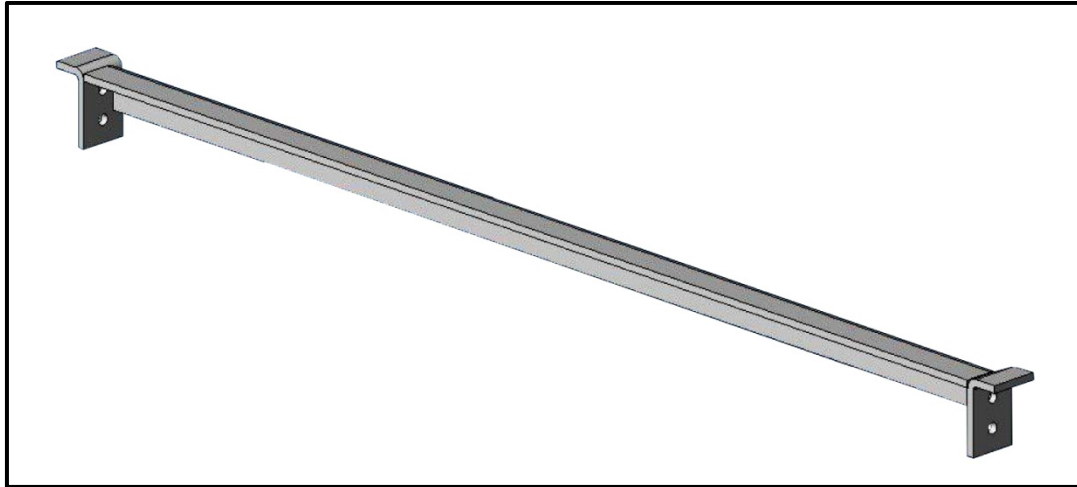


Safety Retainer Post Bracket Assembly

Repeat 1.1 and 1.2 for all uprights.

1.3. Locate Upright Supports

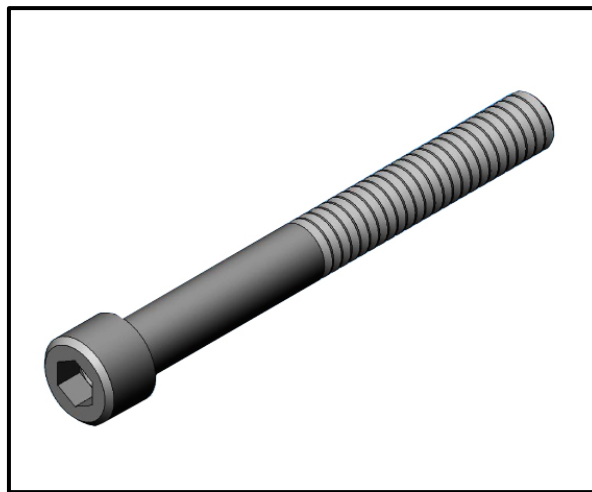
Locate upright supports 80-16123-XXXX.



Upright Support

1.4. Locate Socket Head Cap Screw

Locate ¼-20 X 2-¼ socket head cap screw 77-12036P084.



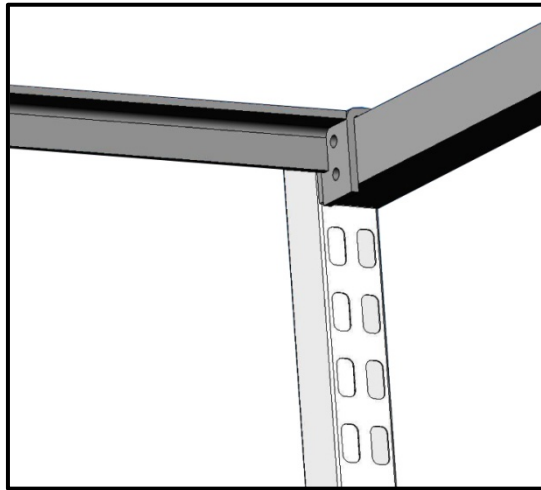
Socket Head Cap Screw

1.5. Locate Hex Nuts

Locate ¼-20 hex nuts 77-12036P038.

1.6. Position Support

Starting at right end door position support on top of right hand upright aligning holes in support to holes in upright.



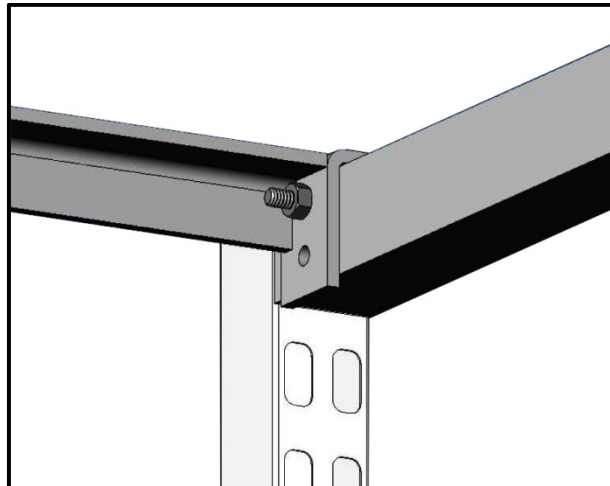
Position Support

1.7. Insert Bolt

Insert bolt through upright into support.

1.8. Thread Nut

Thread nut by hand to secure support so opposite end can be repeated.



Thread Nut

1.9. Tighten Nut and Bolt

Using 3/16 allen wrench and 7/16 open end wrench tighten nut and bolt.

All holes are to have screw and nut for proper stability.

Repeat steps 1.4 – 1.9 for all doors requiring uprights.

2. Revision History Page

REV	ORIGINATOR	DESCRIPTION OF CHANGE	EFFECTIVE DATE
A		Initial Release	03/21/2006
B	S. Fisher	Reformat from PDF to Word and revise art	03/26/2013