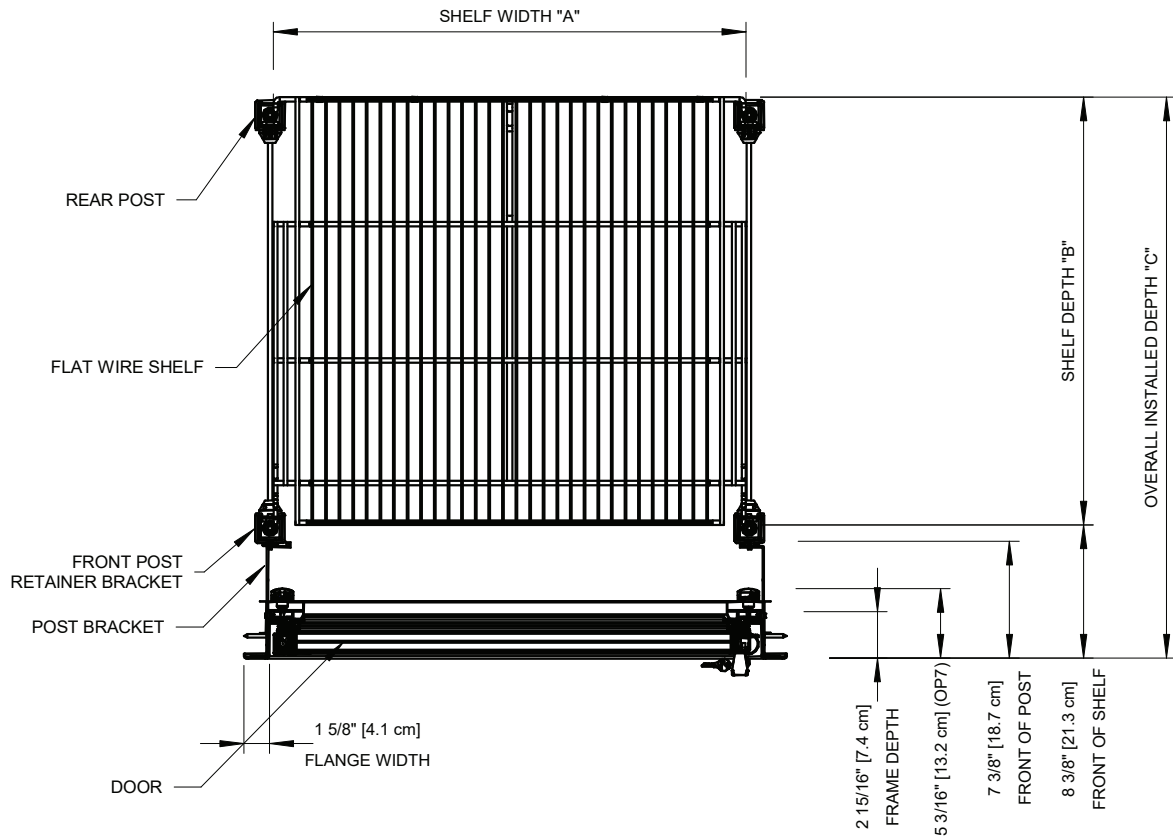


401 SERIES

Door Models 401N - Frame 101N - Std Flat Wire Shelving Set Back
1 Door - Normal Temp & Low Temp

MODEL WIDTH		
Catalog Door Width	Actual Door Width	Shelf Width "A"
24	23 3/16"	23 5/16"
26	26 3/8"	26 5/16"
28	28 3/8"	28 5/16"
30	29 7/8"	29 13/16"

MODEL DEPTH	
Shelf Depth "B"	Overall Installed Depth "C"
24	30 9/16"
27	33 9/16"
36	42 9/16"



401 SERIES

Rev. Date	Rev. #	Rev. Title
05-01-26	0	NEW STANDARD